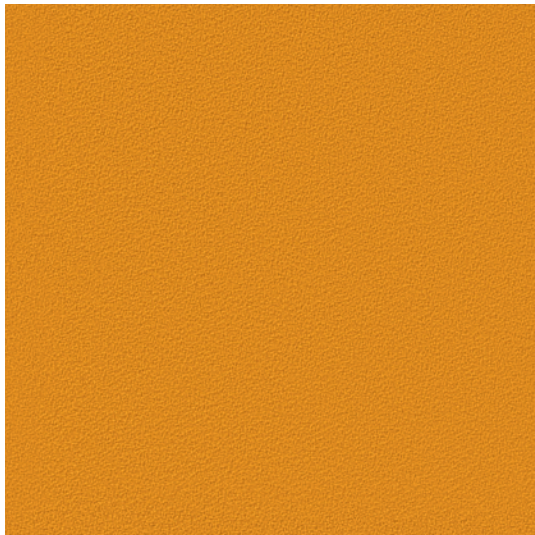




INTENSIVE



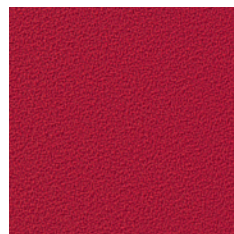
Gelb

BD 005



Orange

BD 012



Rot

BD 011



Hellgrün

BD 021



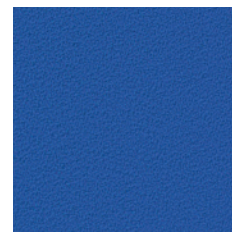
Grün

BD 048



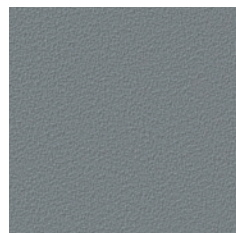
Taubenblau

BD 003



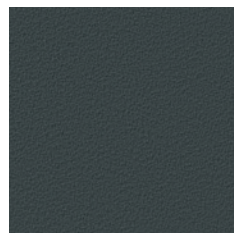
Jeansblau

BD 071



Hellgrau

BD 078



Anthrazit

BD 023



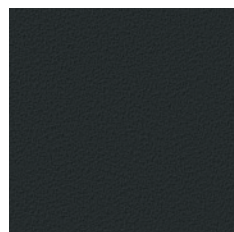
Dunkelblau

BD 006



Hellbraun

BD 008



Schwarz

BD 033



STOFFEIGENSCHAFTEN

FABRIC CHARACTERISTICS | PROPRIÉTÉS DES TISSUS | PROPIEDADES DE LA TELA

INTENSIVE

PREISGRUPPE 1 | PRICE GROUP 1 | GROUPE DE PRIX 1 | GRUPO DE PRECIOS 1

DE MATERIAL

100% Polyester

BRANDVERHALTEN

schwer entflammbar nach EN 1021 1&2

GEWICHT

250 g/m² +/-5%

SCHEUERFESTIGKEIT IN MARTINDALE

> 100.000 Touren

FUSSELBILDUNG

5

SCHADSTOFFGEPRÜFT

ÖKO-TEX 100

FR MATIÈRE

100% polyester

RÉACTION AU FEU

difficilement inflammable selon EN 1021 1&2

POIDS

250 g/m² +/-5%

RÉSISTANCE À L'ABRASION EN TOURS MARTINDALE

> 100 000 tours

PELUCHAGE

5

CERTIFIÉ SANS SUBSTANCES NOCIVES

ÖKO-TEX 100

EN MATERIAL

100% polyester

FIRE BEHAVIOUR

flame retardant according to EN 1021 1&2

WEIGHT

250 g/m² +/-5% (8.82 oz/yd² +/-5%)

ABRASION RESISTANCE IN MARTINDALE

> 100,000 runs

PILLING

5

TESTED FOR HARMFUL SUBSTANCES

ÖKO-TEX 100

ES MATERIAL

100% poliéster

REACCIÓN AL FUEGO

difícilmente inflamable según EN 1021 1&2

PESO

250 g/m² +/-5%

RESISTENCIA A LA ABRASIÓN EN MARTINDALE

> 100 000 ciclos

FORMACIÓN DE PELUSAS

5

A PRUEBA DE SUSTANCIAS NOCIVAS

ÖKO-TEX 100