

SHELF, WITH CENTER PANEL, 2 FH (W 80 CM/D 58 CM)

PRODUCT-DETAIL.MODEL-4490.620



STANDARD VERSION

Body, 3-layer particle board (E1), melamine coated, highly abrasion-resistant, with 1 mm plastic edge, thickness 19 mm. The glued-in, 8 mm thick back panel gives the carcass its stability and strength.

Note: 1 folder height (OH) \pm 38.4 cm

Comes standard with folding base, PP-coated 3-layer chipboard (E1), 22 mm thick. Base height: 10 cm.

OPTIONS

- Decoration group 2
- Castors for cabinet base
- with side handles
- with handles at the top
- Shelf (additional)
- Base adjustment
- Steel base (chrome silver 9006)

CONFIGURATION

- Finishes | Finishes Price group 1, Finishes Price group 2

STANDARD

DIN EN 14074, DIN EN 14073-2, DIN EN 14073-3, DIN EN 16121, DIN EN 16122

FEMB level:2017 (Level 3)

TECHNICAL SPECIFICATIONS

FOLDER HEIGHT	2
WIDTH	80 cm
TOTAL HEIGHT	119 cm
HEIGHT OF COMBI TOP CABINET	117 cm
DEPTH	58 cm
NO. OF ADJUSTABLE SHELVES	2
WEIGHT	80 kg

Our range of materials and colors can be found in the A2S material overview.



A2S-Furnishing Systems Ltd.
ASS-Einrichtungssysteme GmbH
info@ass.de
WWW.A2S.COM

SHELF, WITH CENTER PANEL, 2 FH (W 80 CM/D 58 CM)

PRODUCT-DETAIL.MODEL-4490.620



BENEFITS/SPECIALS



Board material melamine coated with robust plastic edge



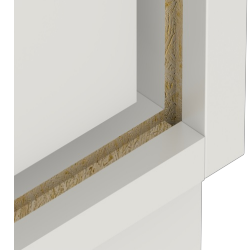
Pull-out proof shelf supports



Optionally with robust steel base



Mobile on 4 castors, 2 of which are lockable



Resistance to warping due to 8 mm thick back wall



Carcass firmly doweled and glued ex works