

# SHELF, WITHOUT CENTER PANEL, 3 FH (W 120 CM/D 42 CM)

PRODUCT-DETAIL.MODEL-4425.830



## STANDARD VERSION

Body, 3-layer particle board (E1), melamine coated, highly abrasion-resistant, with 1 mm plastic edge, thickness 19 mm. The glued-in, 8 mm thick back panel gives the carcass its stability and strength.

**Note:** 1 folder height (OH)  $\pm$  38.4 cm

Comes standard with folding base, PP-coated 3-layer chipboard (E1), 22 mm thick. Base height: 10 cm.

## OPTIONS

- Decoration group 2
- Castors for cabinet base
- with side handles
- with handles at the top
- Shelf (additional)
- Base adjustment
- Steel base (chrome silver 9006)

## CONFIGURATION

- Finishes | Finishes Price group 1, Finishes Price group 2

## STANDARD

DIN EN 14074, DIN EN 14073-2, DIN EN 14073-3, DIN EN 16121, DIN EN 16122

FEMB level:2017 (Level 3)

## TECHNICAL SPECIFICATIONS

FOLDER HEIGHT	3
WIDTH	120 cm
TOTAL HEIGHT	127 cm
HEIGHT OF COMBI TOP CABINET	110 cm
DEPTH	42 cm
NO. OF ADJUSTABLE SHELVES	2
WEIGHT	70 kg

Our range of materials and colors can be found in the A2S material overview.



A2S-Furnishing Systems Ltd.  
ASS-Einrichtungssysteme GmbH  
info@ass.de  
WWW.A2S.COM

# SHELF, WITHOUT CENTER PANEL, 3 FH (W 120 CM/D 42 CM)

PRODUCT-DETAIL.MODEL-4425.830



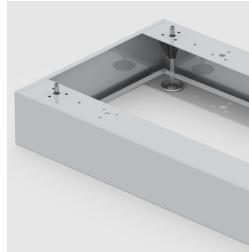
## BENEFITS/SPECIALS



Board material melamine coated with robust plastic edge



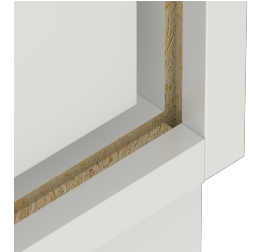
Pull-out proof shelf supports



Optionally with robust steel base



Mobile on 4 castors, 2 of which are lockable



Resistance to warping due to 8 mm thick back wall



Carcass firmly doweled and glued ex works