

# SWIVEL SPINDLE CHAIR

## PRODUCT-DETAIL.MODEL-7847



### STANDARD VERSION

PAGHOLZ® waisted shell, with ergonomic three-dimensional shell shape. Surface melamine coated and pore sealed with a scratch, impact and abrasion resistant finish created in the pressing process. Seat and back surface with pressed-in texture. Steel 5-star base, infinitely variable height adjustment by concealed steel swivel spindle with anti-rotation device. Round tubular column: 50 mm, epoxy coated. Floor protector with step protection.

### OPTIONS

- PAGHOLZ® Color Wood - Price group 2
- PAGHOLZ® COLOUR WOOD
- Handle hole
- Seat upholstery price group 1 (size 6E, 7)
- Seat and back cushion price group 1 (size 6E, 7)
- Seat upholstery price group 2 (size 6E, 7)
- Seat and back cushion price group 2 (size 6E, 7)
- Seat upholstery price group 3 (size 6E, 7)
- Seat and back cushion price group 3 (size 6E, 7)
- Seat upholstery price group 4 (size 6E, 7)
- Seat and back cushion price group 4 (size 6E, 7)
- Felt floor protectors

### CONFIGURATION

- الملون PAGHOLZ® خشب
- الملون PAGHOLZ® خشب
- الملون PAGHOLZ® خشب
- ألوان الإطار

### STANDARD

FEMB level:2017 (Level 3)

DIN EN 1729-1, DIN EN 1729-2

### LOAD CAPACITY

120 kg

Our range of materials and colors can be found in the A2S material overview.



A2S-Furnishing Systems Ltd.  
ASS-Einrichtungssysteme GmbH  
info@ass.de  
WWW.A2S.COM

# SWIVEL SPINDLE CHAIR

## PRODUCT-DETAIL.MODEL-7847



### SIZES

SIZE	5-7
CHAIR WIDTH	71 cm
CHAIR HEIGHT	10-17 cm
SEAT HEIGHT	01-13 cm
CHAIR DEPTH	71 cm
STACKABILITY	-
WEIGHT	1 kg

### BENEFITS/SPECIALS



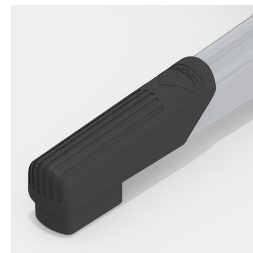
PAGHOLZ® from sustainable forestry



Optionally with grip hole, round or oval



Colour deviations possible



Robust plastic floor protectors with step protection



Optionally with seat and backrest upholstery (only sizes 6E, 7)



Indestructible PAGHOLZ® shell, scratch, break and impact resistant; flame retardant



Ergonomically and orthopedically adapted shell shape



Extremely robust steel base

### FABRIC PROPERTIES

#### INTENSIVE Price group 1

100% polyester | flame retardant according to EN 1021 1&2 | 250 g/m<sup>2</sup> +/-5% | 100,000 Martindale tours | linting 5 | ÖKO-Tex 100

#### SKANDIA Price group 1

100% polyester | flame retardant according to EN 1021 1 | 245 g/m<sup>2</sup> +/-5% | 70,000 Martindale tours | linting 4-5 | ÖKO-Tex 100

#### FLEECE Price group 1

100% polyester | flame retardant BS 5852:Part1:1979 (cigarette) | 402 g/m<sup>2</sup> | 100,000 Martindale tours | linting 4 | ÖKO-Tex 100

#### TAFF B1 Price group 2

100% polyester | flame retardant according to EN 1021 1&2, DIN 4102 B1 | 260 g/m<sup>2</sup> +/-5% | 70,000 Martindale tours | linting 5 | ÖKO-Tex 100

#### WOOL Price group 3

100% wool | flame retardant according to EN 1021 1&2 | 460 g/m<sup>2</sup> +/-5% | 35,000 Martindale tours | linting 4 | tested for harmful substances

#### PROTEX Price group 3

surface 100% vinyl / fabric 100% polyester | flame retardant according to EN 1021 1&2, DIN 4102 B2 | 685 g/m<sup>2</sup> | 300,000 Martindale tours | no linting | wipeable with soap and water, water repellent, antibacterial, anti-static, stain resistant, resistant to blood and urine, mold resistant backing and surface, resistant to disinfectants

#### ARTIFICIAL LEATHER Price group 3

surface 100% polyurethane/ fabric 65% polyester, 35% cotton | flame retardant according to EN 1021-1 | 435 g/m<sup>2</sup> +/-10% | 100,000 Martindale tours | no linting | tested for harmful substances

#### ARTIFICIAL LEATHER B1 Price group 4

85% PVC compound, 15% cotton knit | flame retardant according to EN 1021 1&2, DIN 4102 B1 | weight 780 +/-50 g/m<sup>2</sup> | 75,000 Martindale tours | no linting | tested for harmful substances | resistant to blood and urine, resistant to disinfectants