

SWIVEL SPINDLE CHAIR

PRODUCT-DETAIL.MODEL-7846



STANDARD VERSION

PAGHOLZ® straight shell, with ergonomically shaped. Surface melamine coated and pore sealed with a scratch, impact and abrasion resistant finish created in the pressing process. Seat surface with pressed-in texture.
Steel 5-star base, infinitely variable height adjustment by concealed steel swivel spindle with anti-rotation device. Round tubular column: 50 mm, epoxy coated. Floor protector with step protection.

OPTIONS

- PAGHOLZ® Color Wood - Price group 2
- PAGHOLZ® COLOUR WOOD
- Handle hole
- Seat upholstery price group 1 (size 6E, 7)
- Seat and back cushion price group 1 (size 6E, 7)
- Seat upholstery price group 2 (size 6E, 7)
- Seat and back cushion price group 2 (size 6E, 7)
- Seat upholstery price group 3 (size 6E, 7)
- Seat and back cushion price group 3 (size 6E, 7)
- Seat upholstery price group 4 (size 6E, 7)
- Seat and back cushion price group 4 (size 6E, 7)
- Felt floor protectors

CONFIGURATION

- الملون PAGHOLZ® خشب
- الملون PAGHOLZ® خشب
- الملون PAGHOLZ® خشب
- ألوان الإطار

STANDARD

FEMB level:2017 (Level 3)

DIN EN 1729-1, DIN EN 1729-2

LOAD CAPACITY

120 kg

Our range of materials and colors can be found in the A2S material overview.



A2S-Furnishing Systems Ltd.
ASS-Einrichtungssysteme GmbH
info@ass.de
WWW.A2S.COM

SWIVEL SPINDLE CHAIR

PRODUCT-DETAIL.MODEL-7846



SIZES

SIZE	5-7
CHAIR WIDTH	71 cm
CHAIR HEIGHT	119-141 cm
SEAT HEIGHT	48-50 cm
CHAIR DEPTH	71 cm
STACKABILITY	-
WEIGHT	7 kg

BENEFITS/SPECIALS



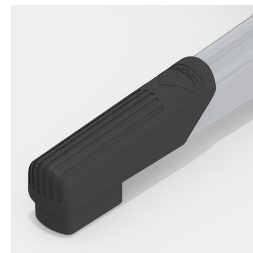
PAGHOLZ® from sustainable forestry



Optionally with grip hole, round or oval (not with backrest upholstery)



Colour deviations possible



Robust plastic floor protectors with step protection



Optionally with seat and backrest upholstery (only sizes 6E, 7)



Indestructible PAGHOLZ® shell, scratch, break and impact resistant; flame retardant



Ergonomically shaped and flexible shell



Extremely robust steel base

FABRIC PROPERTIES

INTENSIVE Price group 1

100% polyester | flame retardant according to EN 1021 1&2 | 250 g/m² +/-5% | 100,000 Martindale tours | linting 5 | ÖKO-Tex 100

SKANDIA Price group 1

100% polyester | flame retardant according to EN 1021 1 | 245 g/m² +/-5% | 70,000 Martindale tours | linting 4-5 | ÖKO-Tex 100

FLEECE Price group 1

100% polyester | flame retardant BS 5852:Part1:1979 (cigarette) | 402 g/m² | 100,000 Martindale tours | linting 4 | ÖKO-Tex 100

TAFF B1 Price group 2

100% polyester | flame retardant according to EN 1021 1&2, DIN 4102 B1 | 260 g/m² +/-5% | 70,000 Martindale tours | linting 5 | ÖKO-Tex 100

WOOL Price group 3

100% wool | flame retardant according to EN 1021 1&2 | 460 g/m² +/-5% | 35,000 Martindale tours | linting 4 | tested for harmful substances

PROTEX Price group 3

surface 100% vinyl / fabric 100% polyester | flame retardant according to EN 1021 1&2, DIN 4102 B2 | 685 g/m² | 300,000 Martindale tours | no linting | wipeable with soap and water, water repellent, antibacterial, anti-static, stain resistant, resistant to blood and urine, mold resistant backing and surface, resistant to disinfectants

ARTIFICIAL LEATHER Price group 3

surface 100% polyurethane/ fabric 65% polyester, 35% cotton | flame retardant according to EN 1021-1 | 435 g/m² +/-10% | 100,000 Martindale tours | no linting | tested for harmful substances

ARTIFICIAL LEATHER B1 Price group 4

85% PVC compound, 15% cotton knit | flame retardant according to EN 1021 1&2, DIN 4102 B1 | weight 780 +/-50 g/m² | 75,000 Martindale tours | no linting | tested for harmful substances | resistant to blood and urine, resistant to disinfectants