

# WOODMARK SWIVEL SPINDLE CHAIR PRODUCT-DETAIL.MODEL-7950



## STANDARD VERSION

Seat and back separate and shaped to fit the body. Made of multiplex, surface melamine coated and pore sealed with a scratch, impact and abrasion resistant finish produced in the pressing process.

In beech D334 as standard. Seat surface with pressed-in, anti-slip knobs. Edges softly rounded.

Steel 5-star base, infinitely variable height adjustment by concealed steel swivel spindle with anti-rotation device. Round tubular column: 50 mm, epoxy coated. Floor protector with step protection.

## OPTIONS

- WOODMARK maple D033 or gray white U023
- Seat and back color stained
- Seat and back riveted
- Felt floor protectors

## STANDARD

FEMB level:2017 (Level 3)

DIN EN 1729-1, DIN EN 1729-2

## LOAD CAPACITY

120 kg

## SIZES

SIZE	5-7
CHAIR WIDTH	07 cm
CHAIR HEIGHT	94-116 cm
SEAT HEIGHT	09-11 cm
CHAIR DEPTH	07 cm
STACKABILITY	-
WEIGHT	9 kg

Our range of materials and colors can be found in the A2S material overview.



A2S-Furnishing Systems Ltd.  
ASS-Einrichtungssysteme GmbH  
info@ass.de  
WWW.A2S.COM

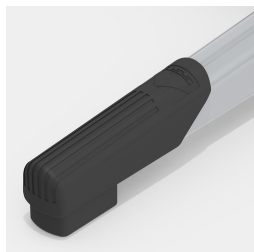
# WOODMARK SWIVEL SPINDLE CHAIR PRODUCT-DETAIL.MODEL-7950



## BENEFITS/SPECIALS



Colour deviations possible



Robust plastic floor protectors  
with step protection



Seat surface with pressed-in,  
anti-slip knobs



Seat and back concealed  
screwed



Extremely robust steel base



Seat and back melamine  
coated: scratch, break and  
impact resistant; flame  
retardant