

WOODMARK SWIVEL SPINDLE CHAIR WITH CASTERS PRODUCT-DETAIL.MODEL-7960



STANDARD VERSION

Seat and back separate and shaped to fit the body. Made of multiplex, surface melamine coated and pore sealed with a scratch, impact and abrasion resistant finish produced in the pressing process.

In beech D334 as standard. Seat surface with pressed-in, anti-slip knobs. Edges softly rounded.

Steel 5-star base, infinitely variable height adjustment by concealed steel swivel spindle with anti-rotation device. Round tubular column: 50 mm, epoxy coated. Load-dependent braked casters with step protection.

OPTIONS

- WOODMARK maple D033 or gray white U023
- Seat and back color stained
- Seat and back riveted

STANDARD

FEMB level:2017 (Level 3)

DIN EN 1729-1, DIN EN 1729-2

LOAD CAPACITY

120 kg

SIZES

SIZE	5-7
CHAIR WIDTH	07 cm
CHAIR HEIGHT	94-77 cm
SEAT HEIGHT	09-41 cm
CHAIR DEPTH	07 cm
STACKABILITY	-
WEIGHT	10 kg

Our range of materials and colors can be found in the A2S material overview.



A2S-Furnishing Systems Ltd.
ASS-Einrichtungssysteme GmbH
info@ass.de
WWW.A2S.COM

WOODMARK SWIVEL SPINDLE CHAIR WITH CASTERS PRODUCT-DETAIL.MODEL-7960



BENEFITS/SPECIALS



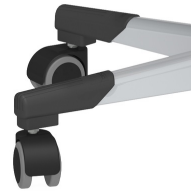
Colour deviations possible



Seat surface with pressed-in, anti-slip knobs



Seat and back concealed screwed



Optional swivel spindle base with rubberized double casters



Seat and back melamine coated: scratch, break and impact resistant; flame retardant