

# CORK LINOLEUM WALL BOARD (200X120 CM) PRODUCT-DETAIL.MODEL-6815406



## STANDARD VERSION

Long wall mounted board. Sandwich support panel, edges with natural anodized aluminum profiles and rounded plastic corners. Edging glued watertight.

Surface made of cork linoleum, glued with carrier plate.

## OPTIONS

- Picture strip
- Picture clamp
- Tray
- Tack set

## STANDARD

DIN EN 14434, DIN EN 71-3

## TECHNICAL SPECIFICATIONS

WIDTH	200 cm
HEIGHT	121 cm
NO. OF WRITING SURFACES	1
WEIGHT	37 kg
VERSION	wall mounted

Our range of materials and colors can be found in the A2S material overview.



Management System  
ISO 14001:2015  
ISO 9001:2015  
www.tuv.com  
ID: 201070383

**MADE  
IN  
GERMANY**

A2S-Furnishing Systems Ltd.  
ASS-Einrichtungssysteme GmbH  
info@ass.de  
WWW.A2S.COM

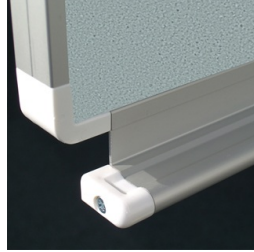
# CORK LINOLEUM WALL BOARD (200X120 CM) PRODUCT-DETAIL.MODEL-6815406



## BENEFITS/SPECIALS



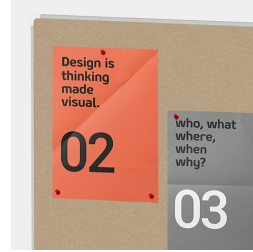
Optionally with picture clamping bar



Matching shelf for chalk and pens



Edge protection due to rounded safety corners



Tackable surface