

CORK LINOLEUM WALL BOARD (250X120 CM) PRODUCT-DETAIL.MODEL-6815408



STANDARD VERSION

Long wall mounted board. Sandwich support panel, edges with natural anodized aluminum profiles and rounded plastic corners. Edging glued watertight.

Surface made of cork linoleum, glued with carrier plate.

OPTIONS

- Picture strip
- Picture clamp
- Tray
- Tack set

STANDARD

DIN EN 14434, DIN EN 71-3

TECHNICAL SPECIFICATIONS

WIDTH	250 cm
HEIGHT	120 cm
NO. OF WRITING SURFACES	1
WEIGHT	8.4 kg
VERSION	wall mounted

Our range of materials and colors can be found in the A2S material overview.



A2S-Furnishing Systems Ltd.
ASS-Einrichtungssysteme GmbH
info@ass.de
WWW.A2S.COM

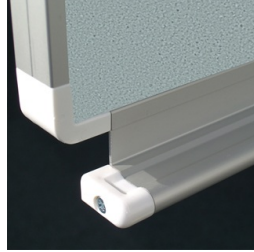
CORK LINOLEUM WALL BOARD (250X120 CM) PRODUCT-DETAIL.MODEL-6815408



BENEFITS/SPECIALS



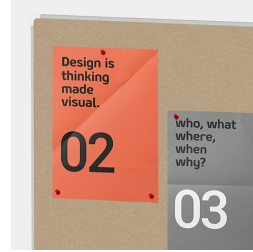
Optionally with picture clamping bar



Matching shelf for chalk and pens



Edge protection due to rounded safety corners



Tackable surface