

# PYLON FOLDING SLIDING BOARD, WHITE STEEL (200X150 CM)

PRODUCT-DETAIL.MODEL-6850311



## STANDARD VERSION

With stable column guide for wall mounting. Writing surface enamelled and magnetic steel, glued with support plate, guided between the pylons. Edges with natural anodized aluminum profiles and rounded plastic corners. Edging glued watertight. Board includes marker tray.

## OPTIONS

- Extension of the pylons
- Picture strip
- Picture clamp
- Blackboard eraser
- Eraser Felt
- Holder for whiteboard pens
- Whiteboard pen
- Magnets Ø 30 mm
- Power magnets Ø 36 mm
- Drawing tool set, 4 pieces
- Drawing tool set, 4 pieces
- Drawing tool set, 6 pieces

## STANDARD

DIN EN 14434, DIN EN 71-3

## TECHNICAL SPECIFICATIONS

WIDTH	200 cm
HEIGHT	100 cm
PYLON HEIGHT	220 cm
NO. OF WRITING SURFACES	5
WEIGHT	237 kg
VERSION	hinged side panels, adjustable in height, wall mounted

Our range of materials and colors can be found in the A2S material overview.



A2S-Furnishing Systems Ltd.  
ASS-Einrichtungssysteme GmbH  
info@ass.de  
WWW.A2S.COM

# PYLON FOLDING SLIDING BOARD, WHITE STEEL (200X150 CM)

PRODUCT-DETAIL.MODEL-6850311



## BENEFITS/SPECIALS



Maintenance-free, low-noise precision guidance on 8 ball-bearing track rollers



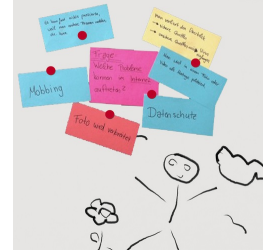
Panel wings can be folded out at 180° angle



Edge protection due to rounded safety corners



Eraser and pen tray included



Magnetic surface can be written on with whiteboard pens