

# GAS LIFT SWIVEL CHAIR WITH FOOT RING

## PRODUCT-DETAIL.MODEL-8379.002



### STANDARD VERSION

Straight, rectangular seat shell, shaped to fit the body, with concealed screws. Made of multiplex, consisting of beech plywood, veneered crosswise. Standard in beech multiplex natural, environmentally friendly lacquered with water-based lacquer, edges softly rounded. Aluminum 5-star base, with infinitely variable gas lift height adjustment. Round tubular column: 50 mm, epoxy coated. Version with elevation and height-adjustable foot ring, chrome-plated. With plastic feet. Distance seat to floor: 446 - 658 mm

### OPTIONS

- Shell with CPL coating
- Handle hole
- Seat upholstery price group 1 (size 6)
- Seat and back cushion price group 1 (size 6)
- Seat upholstery price group 2 (size 6)
- Seat and back cushion price group 2 (size 6)
- Seat upholstery price group 3 (size 6)
- Seat and back cushion price group 3 (size 6)
- Seat upholstery price group 4 (size 6)
- Seat and back cushion price group 4 (size 6)
- Felt floor protectors
- Load-dependent braking casters (SH +3 cm)
- Polished aluminum base

### CONFIGURATION

- Upholstery fabrics | INTENSIVE Price group 1, SKANDIA Price group 1, FLEECE Price group 1, TAFF B1 Price group 2, WOOL Price group 3, PROTEX Price group 3, ARTIFICIAL LEATHER Price group 3, ARTIFICIAL LEATHER B1 Price group 4

### STANDARD

DIN EN 1729-1, DIN EN 1729-2, DIN EN 16139

GS-zertifiziert gem. DIN EN 1729-1, DIN EN 1729-2

FEMB level:2017 (Level 3)

### LOAD CAPACITY

120 kg

Our range of materials and colors can be found in the A2S material overview.



A2S-Furnishing Systems Ltd.  
ASS-Einrichtungssysteme GmbH  
info@ass.de  
WWW.A2S.COM

# GAS LIFT SWIVEL CHAIR WITH FOOT RING

## PRODUCT-DETAIL.MODEL-8379.002



### SIZES

SIZE	5-7
CHAIR WIDTH	77 cm
CHAIR HEIGHT	111-118 cm
SEAT HEIGHT	41-44 cm
CHAIR DEPTH	77 cm
STACKABILITY	-
WEIGHT	11 kg

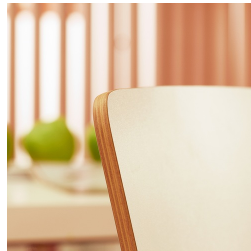
### BENEFITS/SPECIALS



Optionally with rectangular grip hole (not with backrest upholstery)



Optionally with seat and backrest upholstery



Seat shell optionally coated with scratch-resistant multiplex finish



Robust aluminum base with elevation and chrome-plated foot ring, height adjustable



Height adjustment by safety gas spring



Optionally with load-dependent braked casters



Seat shell environmentally friendly lacquered with water-based varnish



Body contoured seat shell

### FABRIC PROPERTIES

#### INTENSIVE Price group 1

100% polyester | flame retardant according to EN 1021 1&2 | 250 g/m<sup>2</sup> +/-5% | 100,000 Martindale tours | linting 5 | ÖKO-Tex 100

#### SKANDIA Price group 1

100% polyester | flame retardant according to EN 10211 | 245 g/m<sup>2</sup> +/-5% | 70,000 Martindale tours | linting 4-5 | ÖKO-Tex 100

#### FLEECE Price group 1

100% polyester | flame retardant BS 5852:Part1:1979 (cigarette) | 402 g/m<sup>2</sup> | 100,000 Martindale tours | linting 4 | ÖKO-Tex 100

#### TAFF B1 Price group 2

100% polyester | flame retardant according to EN 1021 1&2, DIN 4102 B1 | 260 g/m<sup>2</sup> +/-5% | 70,000 Martindale tours | linting 5 | ÖKO-Tex 100

#### WOOL Price group 3

100% wool | flame retardant according to EN 1021 1&2 | 460 g/m<sup>2</sup> +/-5% | 35,000 Martindale tours | linting 4 | tested for harmful substances

#### PROTEX Price group 3

surface 100% vinyl / fabric 100% polyester | flame retardant according to EN 1021 1&2, DIN 4102 B2 | 685 g/m<sup>2</sup> | 300,000 Martindale tours | no linting | wipeable with soap and water, water repellent, antibacterial, anti-static, stain resistant, resistant to blood and urine, mold resistant backing and surface, resistant to disinfectants

#### ARTIFICIAL LEATHER Price group 3

surface 100% polyurethane/ fabric 65% polyester, 35% cotton | flame retardant according to EN 1021-1 | 435 g/m<sup>2</sup> +/-10% | 100,000 Martindale tours | no linting | tested for harmful substances

#### ARTIFICIAL LEATHER B1 Price group 4

85% PVC compound, 15% cotton knit | flame retardant according to EN 1021 1&2, DIN 4102 B1 | weight 780 +/-50 g/m<sup>2</sup> | 75,000 Martindale tours | no linting | tested for harmful substances | resistant to blood and urine, resistant to disinfectants