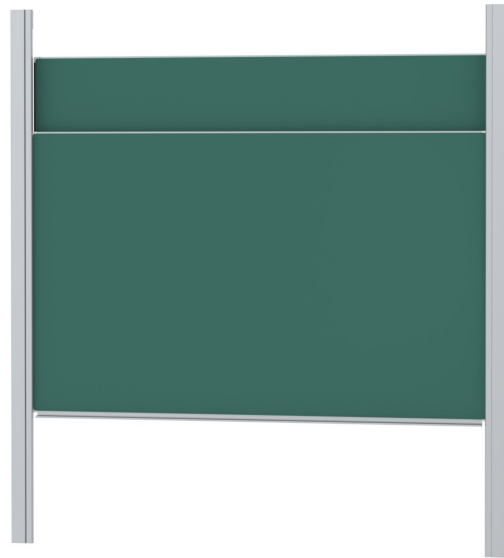


PYLON DOUBLE SLIDING BOARD, GREEN STEEL (250X150 CM)

PRODUCT-DETAIL.MODEL-6854212



STANDARD VERSION

With stable column guide for wall mounting. Writing surface enamelled and magnetic steel, glued with support plate, guided between the pylons. Edges with natural anodized aluminum profiles and rounded plastic corners. Edging glued watertight. Board includes marker tray.

OPTIONS

- Extension of the pylons
- Picture strip
- Picture clamp
- Blackboard eraser
- Eraser Felt
- Holder for whiteboard pens
- Whiteboard pen
- Magnets Ø 30 mm
- Power magnets Ø 36 mm
- Drawing tool set, 4 pieces
- Drawing tool set, 4 pieces
- Drawing tool set, 6 pieces
- Rulings 01/ 02/ 03/ 04/ 05/ 07/ 08/ 10/ 11/ 12/ 15

STANDARD

DIN EN 14434, DIN EN 71-3

TECHNICAL SPECIFICATIONS

WIDTH	200 cm
HEIGHT	100 cm
PYLON HEIGHT	270 cm
NO. OF WRITING SURFACES	2
WEIGHT	224 kg
VERSION	adjustable in height, wall mounted

Our range of materials and colors can be found in the A2S material overview.



A2S-Furnishing Systems Ltd.
ASS-Einrichtungssysteme GmbH
info@ass.de
WWW.A2S.COM

PYLON DOUBLE SLIDING BOARD, GREEN STEEL (250X150 CM)

PRODUCT-DETAIL.MODEL-6854212



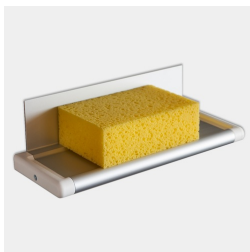
BENEFITS/SPECIALS



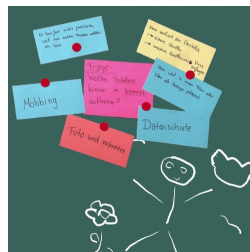
Maintenance-free, low-noise precision guidance on 8 ball-bearing track rollers



Two writing surfaces can be moved one behind the other



Eraser tray for wall mounting included



Magnetic surface can be written on with chalk