

GAS LIFT SWIVEL CHAIR

PRODUCT-DETAIL.MODEL-8337



STANDARD VERSION

Waisted, angular seat shell, shaped to fit the body. Made of multiplex, consisting of beech plywood, veneered lengthwise. Standard in beech multiplex natural, environmentally friendly lacquered with water-based lacquer, edges softly rounded.

Aluminum 5-star base, with infinitely variable gas lift height adjustment. Round tubular column: 50 mm, epoxy coated. With plastic feet.

OPTIONS

- 3D rocking mechanism
- Multiplex COLOUR WOOD
- Handle hole
- Felt floor protectors
- Load-dependent braking casters (SH +3 cm)
- Polished aluminum base

STANDARD

DIN EN 1729-1, DIN EN 1729-2, DIN EN 16139

FEMB level:2017 (Level 3)

LOAD CAPACITY

120 kg

SIZES

| | |
|--------------|----------|
| SIZE | 3-5 |
| CHAIR WIDTH | 08 cm |
| CHAIR HEIGHT | 72-71 cm |
| SEAT HEIGHT | 81-30 cm |
| STACKABILITY | - |
| WEIGHT | 7 kg |

Our range of materials and colors can be found in the A2S material overview.



A2S-Furnishing Systems Ltd.
ASS-Einrichtungssysteme GmbH
info@ass.de
WWW.A2S.COM

GAS LIFT SWIVEL CHAIR

PRODUCT-DETAIL.MODEL-8337



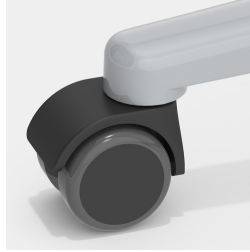
BENEFITS/SPECIALS



Optionally with handle hole in trapezoidal shape (not with backrest upholstery)



Height adjustment by safety gas spring



Optionally with load-dependent braked casters



Seat shell environmentally friendly lacquered with water-based varnish



Body contoured seat shell



Extremely robust aluminum base