

# GAS LIFT SWIVEL CHAIR

## PRODUCT-DETAIL.MODEL-8377



### STANDARD VERSION

Waisted, angular seat shell, shaped to fit the body. Made of multiplex, consisting of beech plywood, veneered lengthwise. Standard in beech multiplex natural, environmentally friendly lacquered with water-based lacquer, edges softly rounded.

Aluminum 5-star base, with infinitely variable gas lift height adjustment. Round tubular column: 50 mm, epoxy coated. With plastic feet.

### OPTIONS

- Multiplex COLOUR WOOD
- Handle hole
- Seat upholstery price group 1 (size 6, 7)
- Seat and back cushion price group 1 (size 6, 7)
- Seat upholstery price group 2 (size 6, 7)
- Seat and back cushion price group 2 (size 6, 7)
- Seat upholstery price group 3 (size 6, 7)
- Seat and back cushion price group 3 (size 6, 7)
- Seat upholstery price group 4 (size 6, 7)
- Seat and back cushion price group 4 (size 6, 7)
- 2D rocking mechanism
- 3D rocking mechanism
- Felt floor protectors
- Load-dependent braking casters (SH +3 cm)
- Polished aluminum base
- Partial foot ring
- Table suspension

### STANDARD

DIN EN 1729-1, DIN EN 1729-2, DIN EN 16139

FEMB level:2017 (Level 3)

### LOAD CAPACITY

120 kg

### SIZES

|              |           |
|--------------|-----------|
| SIZE         | 5-7       |
| CHAIR WIDTH  | 73 cm     |
| CHAIR HEIGHT | 94-111 cm |
| SEAT HEIGHT  | 42-51 cm  |
| CHAIR DEPTH  | 73 cm     |
| STACKABILITY | -         |
| WEIGHT       | 11 kg     |

Our range of materials and colors can be found in the A2S material overview.



A2S-Furnishing Systems Ltd.  
ASS-Einrichtungssysteme GmbH  
info@ass.de  
WWW.A2S.COM

# GAS LIFT SWIVEL CHAIR

## PRODUCT-DETAIL.MODEL-8377



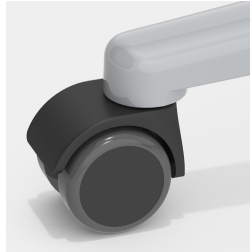
### BENEFITS/SPECIALS



Optionally with handle hole in trapezoidal shape (not with backrest upholstery)



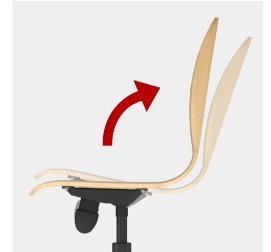
Height adjustment by safety gas spring



Optionally with load-dependent braked casters



Optionally with partial foot ring



Optionally with 2D rocker



Optionally with seat and backrest upholstery



Optionally with 3D rocker



Seat shell environmentally friendly lacquered with water-based varnish



Body contoured seat shell



Extremely robust aluminum base

### FABRIC PROPERTIES

#### INTENSIVE Price group 1

100% polyester | flame retardant according to EN 1021 1&2 | 250 g/m<sup>2</sup> +/-5% | 100,000 Martindale tours | linting 5 | ÖKO-Tex 100

#### SKANDIA Price group 1

100% polyester | flame retardant according to EN 1021 1 | 245 g/m<sup>2</sup> +/-5% | 70,000 Martindale tours | linting 4-5 | ÖKO-Tex 100

#### FLEECE Price group 1

100% polyester | flame retardant BS 5852:Part1:1979 (cigarette) | 402 g/m<sup>2</sup> | 100,000 Martindale tours | linting 4 | ÖKO-Tex 100

#### TAFF B1 Price group 2

100% polyester | flame retardant according to EN 1021 1&2, DIN 4102 B1 | 260 g/m<sup>2</sup> +/-5% | 70,000 Martindale tours | linting 5 | ÖKO-Tex 100

#### WOOL Price group 3

100% wool | flame retardant according to EN 1021 1&2 | 460 g/m<sup>2</sup> +/-5% | 35,000 Martindale tours | linting 4 | tested for harmful substances

#### PROTEX Price group 3

surface 100% vinyl / fabric 100% polyester | flame retardant according to EN 1021 1&2, DIN 4102 B2 | 685 g/m<sup>2</sup> | 300,000 Martindale tours | no linting | wipeable with soap and water, water repellent, antibacterial, anti-static, stain resistant, resistant to blood and urine, mold resistant backing and surface, resistant to disinfectants

#### ARTIFICIAL LEATHER Price group 3

surface 100% polyurethane/ fabric 65% polyester, 35% cotton | flame retardant according to EN 1021-1 | 435 g/m<sup>2</sup> +/-10% | 100,000 Martindale tours | no linting | tested for harmful substances

#### ARTIFICIAL LEATHER B1 Price group 4

85% PVC compound, 15% cotton knit | flame retardant according to EN 1021 1&2, DIN 4102 B1 | weight 780 +/-50 g/m<sup>2</sup> | 75,000 Martindale tours | no linting | tested for harmful substances | resistant to blood and urine, resistant to disinfectants