

GAS LIFT SWIVEL CHAIR

PRODUCT-DETAIL.MODEL-8338



STANDARD VERSION

Waisted, round seat shell waisted, shaped to fit the body. Made of multiplex, consisting of beech plywood, veneered lengthwise. Standard in beech multiplex natural, environmentally friendly lacquered with water-based lacquer, edges softly rounded.

Aluminum 5-star base, with infinitely variable gas lift height adjustment. Round tubular column: 50 mm, epoxy coated. With plastic feet.

OPTIONS

- 3D rocking mechanism
- Multiplex COLOUR WOOD
- Handle hole
- Felt floor protectors
- Load-dependent braking casters (SH +3 cm)
- Polished aluminum base

STANDARD

DIN EN 1729-1, DIN EN 1729-2, DIN EN 16139

GS-zertifiziert gem. DIN EN 1729-1, DIN EN 1729-2

FEMB level:2017 (Level 3)

LOAD CAPACITY

120 kg

SIZES

SIZE	3-5
CHAIR WIDTH	08 cm
CHAIR HEIGHT	72-71 cm
SEAT HEIGHT	42-31 cm
CHAIR DEPTH	08 cm
STACKABILITY	-
WEIGHT	7 kg

Our range of materials and colors can be found in the A2S material overview.



A2S-Furnishing Systems Ltd.
ASS-Einrichtungssysteme GmbH
info@ass.de
WWW.A2S.COM

GAS LIFT SWIVEL CHAIR

PRODUCT-DETAIL.MODEL-8338



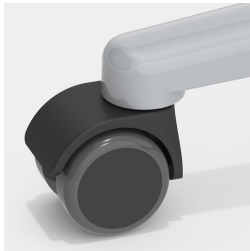
BENEFITS/SPECIALS



Optionally with kidney-shaped grip hole (not with backrest upholstery)



Height adjustment by safety gas spring



Optionally with load-dependent braked casters



Seat shell environmentally friendly lacquered with water-based varnish



Body contoured seat shell



Extremely robust aluminum base