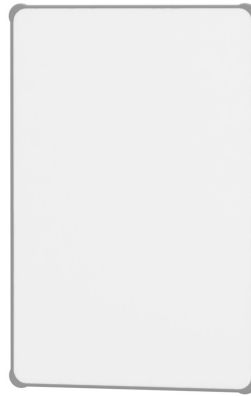


# MULTIFUNCTIONAL BOARD ELEMENT, WHITE STEEL (60X90 CM)

PRODUCT-DETAIL.MODEL-6814321



## STANDARD VERSION

Double-grooved aluminum board rails with plastic caps at all ends. Comes in a variety of lengths. Mounting of the board elements also possible in landscape format (smaller distance between rails).

Writing surface made of enamelled and magnetic steel, glued with sandwich carrier plate. With rounded and waterproof polyurethane ASSODUR® edges on all sides.

## OPTIONS

- Rulings 01/ 02/ 03/ 04/ 05/ 08/ 10/ 11/ 12/ 15
- Board rails top and bottom, length 1 m
- Blackboard eraser
- Eraser Felt
- Holder for whiteboard pens
- Whiteboard pen
- Magnets Ø 30 mm
- Power magnets Ø 36 mm
- Drawing tool set, 4 pieces
- Drawing tool set, 4 pieces
- Drawing tool set, 6 pieces

## STANDARD

DIN EN 14434

## TECHNICAL SPECIFICATIONS

WIDTH	70 cm
HEIGHT	90 cm
NO. OF WRITING SURFACES	2
WEIGHT	8 kg

Our range of materials and colors can be found in the A2S material overview.



A2S-Furnishing Systems Ltd.  
ASS-Einrichtungssysteme GmbH  
info@ass.de  
WWW.A2S.COM

# MULTIFUNCTIONAL BOARD ELEMENT, WHITE STEEL (60X90 CM)

PRODUCT-DETAIL.MODEL-6814321



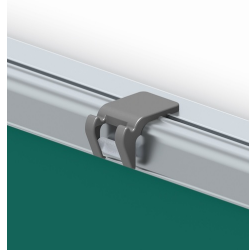
## BENEFITS/SPECIALS



Board elements with ASSODUR® edge can be moved one behind the other



Invisible rail fastening compensates for wall unevenness



Including picture clamps with integrated gallery hooks



Plastic caps prevent accidental ejection



Removable board elements



Can be mounted on cabinet wall



Magnetic surface can be written on with whiteboard pens