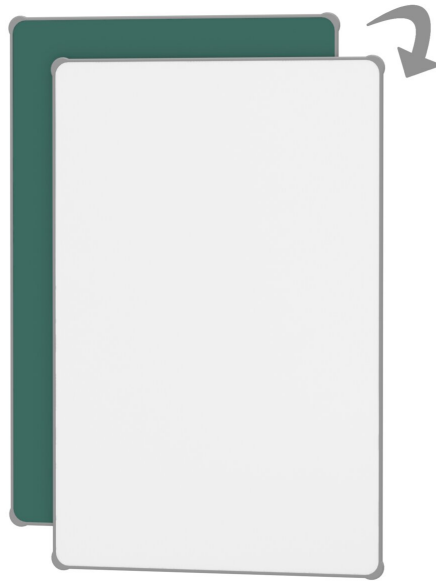


MULTIFUNCTIONAL BOARD ELEMENT, GREEN AND WHITE STEEL (80X120 CM)

PRODUCT-DETAIL.MODEL-6814923



STANDARD VERSION

Double-grooved aluminum board rails with plastic caps at all ends. Comes in a variety of lengths. Mounting of the board elements also possible in landscape format (smaller distance between rails).

Writing surface made of enamelled and magnetic steel, glued with sandwich carrier plate. With rounded and waterproof polyurethane ASSODUR® edges on all sides.

Front and back with two different writing surfaces, 1x green steel for chalk and 1x white steel for dry erase pens.

OPTIONS

- Rulings 01/ 02/ 03/ 04/ 05/ 07/ 08/ 10/ 11/ 12/ 15
- Rulings 01/ 02/ 03/ 04/ 05/ 08/ 10/ 11/ 12/ 15
- Board rails top and bottom, length 1 m
- Blackboard eraser
- Eraser Felt
- Holder for whiteboard pens
- Whiteboard pen
- Magnets Ø 30 mm
- Power magnets Ø 36 mm
- Drawing tool set, 4 pieces
- Drawing tool set, 4 pieces
- Drawing tool set, 6 pieces

STANDARD

DIN EN 14434

TECHNICAL SPECIFICATIONS

WIDTH	120 cm
HEIGHT	80 cm
NO. OF WRITING SURFACES	2
WEIGHT	4 kg

Our range of materials and colors can be found in the A2S material overview.



A2S-Furnishing Systems Ltd.
ASS-Einrichtungssysteme GmbH
info@ass.de
WWW.A2S.COM

MULTIFUNCTIONAL BOARD ELEMENT, GREEN AND WHITE STEEL (80X120 CM)

PRODUCT-DETAIL.MODEL-6814923



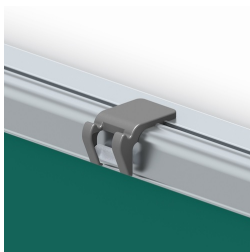
BENEFITS/SPECIALS



Board elements with ASSODUR® edge can be moved one behind the other



Invisible rail fastening compensates for wall unevenness



Including picture clamps with integrated gallery hooks



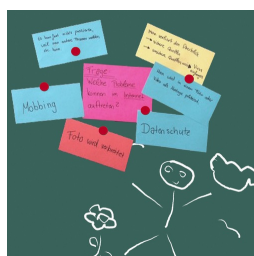
Plastic caps prevent accidental ejection



Removable board elements



Can be mounted on cabinet wall



Magnetic surface can be written on with chalk



Magnetic surface can be written on with whiteboard pens