

# FLEX SWIVEL SPINDLE CHAIR

## PRODUCT-DETAIL.MODEL-7875



### STANDARD VERSION

Plastic shell ergonomically shaped. Material made of polypropylene, recyclable, manufactured in double-wall blown process. Thus soft sitting due to air cushioning effect, with integrated ventilation channels and groove to relieve the spine. Grip hole in the lumbar region and recessed grips on the upper edge of the backrest and underside of the chair.

Steel 5-star base, infinitely variable height adjustment by concealed steel swivel spindle with anti-rotation device. Round tubular column: 50 mm, epoxy coated. Floor protector with step protection.

### OPTIONS

- Fully upholstered FLEX (size 5-7)
- Felt floor protectors
- Casters (SH +3 cm)

### CONFIGURATION

- لون البلاستيك فليكس
- أقمشة الغطاء
- ألوان الإطار

### STANDARD

FEMB level:2017 (Level 3)

DIN EN 1729-1, DIN EN 1729-2

### LOAD CAPACITY

120 kg

### SIZES

SIZE	5-7
CHAIR WIDTH	70 cm
CHAIR HEIGHT	94-78 cm
SEAT HEIGHT	09-43 cm
CHAIR DEPTH	70 cm
STACKABILITY	-
WEIGHT	9 kg

Our range of materials and colors can be found in the A2S material overview.

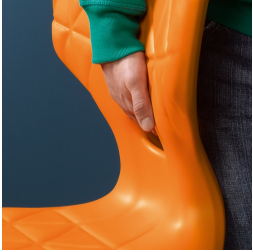


A2S-Furnishing Systems Ltd.  
ASS-Einrichtungssysteme GmbH  
info@ass.de  
WWW.A2S.COM

# FLEX SWIVEL SPINDLE CHAIR PRODUCT-DETAIL.MODEL-7875



## BENEFITS/SPECIALS



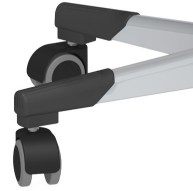
Easy to carry due to low weight



Robust plastic floor protectors  
with step protection



Optional seat shell fully  
upholstered from size 5  
onwards



Optional swivel spindle base  
with rubberized double casters



Seat shell with integrated  
ventilation channel



Extremely robust steel base