

# SLIDING DOOR TOP CABINET WITH CENTER PANEL

## PRODUCT-DETAIL.MODEL-4205.610



### STANDARD VERSION

Body, 3-layer particle board (E1), melamine coated, highly abrasion-resistant, with 1 mm plastic edge, thickness 19 mm.

Back panel, 3-layer chipboard (E1), melamine coated, highly abrasion-resistant, grooved all around, thickness 8 mm.

Lockable, with center panel.

**Note:** 1 folder height (OH)  $\pm$  38.4 cm

Free-standing cabinets from a height of 50H and free-standing cabinets with pull-outs (filing cabinets and drawer cabinets) must be fixed to the floor.

### OPTIONS

- Decoration group 2
- Front decors price group 2
- Front HPL glued
- Shelf (additional)
- Handle PG 2
- Handle PG 3
- Handle PG 4

### CONFIGURATION

- Finishes | Finishes Price group 1, Finishes Price group 2

### STANDARD

FEMB level:2017 (Level 3)

DIN EN 14074, DIN EN 14073-2, DIN EN 14073-3, DIN EN 16121, DIN EN 16122

### TECHNICAL SPECIFICATIONS

FOLDER HEIGHT	1
WIDTH	80 cm
HEIGHT OF TOP CABINET	40 cm
HEIGHT OF COMBI TOP CABINET	38 cm
DEPTH	42 cm
NO. OF ADJUSTABLE SHELVES	0
NO. OF FIXED SHELVES	0
WEIGHT	21 kg

Our range of materials and colors can be found in the A2S material overview.



A2S-Furnishing Systems Ltd.  
ASS-Einrichtungssysteme GmbH  
info@ass.de  
WWW.A2S.COM

# SLIDING DOOR TOP CABINET WITH CENTER PANEL PRODUCT-DETAIL.MODEL-4205.610



## BENEFITS/SPECIALS



Board material melamine coated with robust plastic edge



Pull-out proof shelf supports



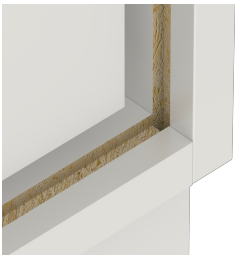
Sliding doors lockable



1 OH cabinet with handle or lock



Carcass firmly doweled and glued ex works



Resistance to warping due to 8 mm thick back wall