

SCHOOL TABLE, TWO-SEATER (130X50/55 CM) PRODUCT-DETAIL.MODEL-9534



STANDARD VERSION

Tabletop, 3-layer chipboard (E1), melamine coated, highly abrasion-resistant, with 3 mm plastic edge, thickness: 25 mm.

Note: Table height specifications refer to a tabletop thickness of 25 mm.

C-shape double column underframe. Side parts oval tube: 40/20/1.5 mm and 50/30/2 mm, plate support steel angle: 30/30/3 mm. Oval tube crossbar: 50/20/2 mm, welded in as fascia. Frame epoxy coated, with plastic floor protector.

With satchel hooks on both sides.

With plate support in the middle.

OPTIONS

- Tabletop with ASSODUR® edge
- Table top HPL glued
- Table top glued with solid wood edge glue-in crowned
- Table top WOODMARK, 21.5 mm
- Table top compact board 12 mm
- Table top Multiplex, 20 mm
- Felt floor protectors
- Glossy, galvanized book basket
- Chair suspension C-shape chairs
- Chair suspension
- Chair suspension PAGHOLZ® sled-base chair
- Chair suspension FLEX GF 5-7 3D rocker
- Chair suspension FLEX GF 3-5 3D rocker
- 1 pair of rails for Tidy Box
- Tidy Box including rails

CONFIGURATION

- الديكورات
- ألوان الإطار

STANDARD

DIN EN 1729-1, DIN EN 1729-2

FEMB level:2017 (Level 3)

Our range of materials and colors can be found in the A2S material overview.



A2S-Furnishing Systems Ltd.
ASS-Einrichtungssysteme GmbH
info@ass.de
WWW.A2S.COM

SCHOOL TABLE, TWO-SEATER (130X50/55 CM) PRODUCT-DETAIL.MODEL-9534



SIZES

SIZE	2	3	4	5	6	7
TABLE WIDTH	130 cm	130 cm	130 cm	130 cm	130 cm	130 cm
TABLE HEIGHT	02 cm	08 cm	78 cm	70 cm	76 cm	82 cm
TABLE DEPTH	00/00 cm	00/00 cm	00/00 cm	00/00 cm	00/00 cm	00/00 cm
STACKABILITY	-	-	-	-	-	-
NUMBER OF SEATS	2	2	2	2	2	2
WEIGHT	17 kg	17 kg	18 kg	18 kg	19 kg	19 kg

BENEFITS/SPECIALS



Melamine coated table top with robust plastic edge



Optional melamine coated table top with ASSODUR® edge



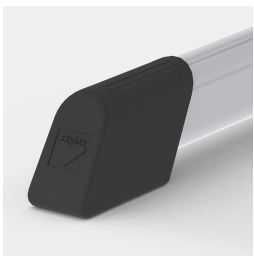
Optional compact board as table top



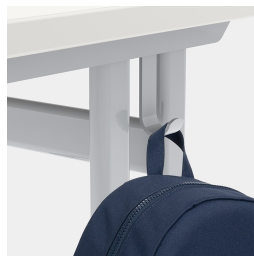
Optional table top multiplex melamine coated



Optional melamine coated table top with solid wood edge



Floor protectors with integrated step protection



Including satchel hooks left and right



Optional WOODMARK table top in shatterproof quality



Due to C-shape no disturbance of the table legs when getting in and out of the table