

# SCHOOL TABLE, TWO-SEATER (150X65 CM) PRODUCT-DETAIL.MODEL-7340



## STANDARD VERSION

Tabletop, 3-layer chipboard (E1), melamine coated, highly abrasion-resistant, with 3 mm plastic edge, thickness: 25 mm.

**Note:** Table height specifications refer to a tabletop thickness of 25 mm.

Center column frame with double tube, side parts round tube: 30/2 mm. Plate support steel angle: 30/30/3 mm. Crosspiece oval tube: 50/20/2 mm, welded in as fascia. Frame epoxy coated, with plastic floor protectors.

With plate support in the middle and satchel hooks on both sides.

## OPTIONS

- Tabletop with ASSODUR® edge
- Table top HPL glued
- Table top glued with solid wood edge glue-in crowned
- Table top compact board 12 mm
- Table top Multiplex, 20 mm
- Felt floor protectors
- Table frame chrome plated
- Glossy, galvanized book basket
- Chair suspension C-shape chairs
- Chair suspension
- Chair suspension PAGHOLZ® sled-base chair

## CONFIGURATION

- الديكورات
- ألوان الإطار
- ألوان الإطار

## STANDARD

DIN EN 1729-1, DIN EN 1729-2

FEMB level:2017 (Level 3)

Our range of materials and colors can be found in the A2S material overview.



A2S-Furnishing Systems Ltd.  
ASS-Einrichtungssysteme GmbH  
info@ass.de  
WWW.A2S.COM

# SCHOOL TABLE, TWO-SEATER (150X65 CM) PRODUCT-DETAIL.MODEL-7340



## SIZES

SIZE	2	3	4	5	6	7
TABLE WIDTH	10· cm	10· cm	10· cm	10· cm	10· cm	10· cm
TABLE HEIGHT	07 cm	08 cm	78 cm	7· cm	77 cm	82 cm
TABLE DEPTH	70 cm	70 cm	70 cm	70 cm	70 cm	70 cm
STACKABILITY	-	-	-	-	-	-
NUMBER OF SEATS	2	2	2	2	2	2
WEIGHT	20 kg	21 kg	21 kg	22 kg	22 kg	23 kg

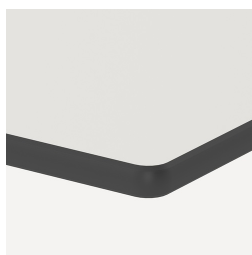
## BENEFITS/SPECIALS



Melamine coated table top with robust plastic edge



Optional melamine coated table top with ASSODUR® edge



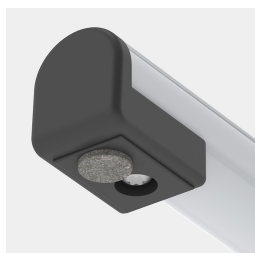
Optional compact board as table top



Optional table top multiplex melamine coated



Optional melamine coated table top with solid wood edge



Optionally with felt floor protectors



Includes one satchel hook per seat



Seating on both sides due to central column frame