

COMBINATION CABINET, 4-DOOR (D 60 CM) PRODUCT-DETAIL.MODEL-4378.850



STANDARD VERSION

Body, 3-layer particle board (E1), melamine coated, highly abrasion-resistant, with 1 mm plastic edge, thickness 19 mm.

Back panel, 3-layer chipboard (E1), melamine coated, highly abrasion-resistant, grooved all around, thickness 8 mm.

Material body, base and doors made of 3-layer chipboard (E1), melamine coated, material thickness 19 mm. Body and shelves with 1 mm plastic edge, doors with 2 mm plastic edge.

Comes standard with folding base, PP-coated 3-layer chipboard (E1), 22 mm thick. Base height: 10 cm.

Note: 1 folder height (OH) \pm 38.4 cm

Free-standing cabinets from a height of 5OH and free-standing cabinets with pull-outs (filing cabinets and drawer cabinets) must be fixed to the floor.

4-door, lockable on one side, with recessed center panel.

OPTIONS

- Decoration group 2
- Front decors price group 2
- Front HPL glued
- Shelf (additional)
- Handle PG 2
- Handle PG 3
- Handle PG 4
- Base adjustment
- Steel base (chrome silver 9006)

STANDARD

DIN EN 14074, DIN EN 14073-2, DIN EN 14073-3, DIN EN 16121, DIN EN 16122

FEMB level:2017 (Level 3)

TECHNICAL SPECIFICATIONS

FOLDER HEIGHT	5
WIDTH	120 cm
TOTAL HEIGHT	208 cm
DEPTH	70 cm
NO. OF ADJUSTABLE SHELVES	6
NO. OF FIXED SHELVES	2
WEIGHT	110 kg

Our range of materials and colors can be found in the A2S material overview.



A2S-Furnishing Systems Ltd.
ASS-Einrichtungssysteme GmbH
info@ass.de
WWW.A2S.COM

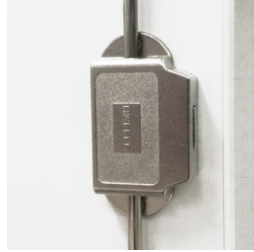
COMBINATION CABINET, 4-DOOR (D 60 CM) PRODUCT-DETAIL.MODEL-4378.850



BENEFITS/SPECIALS



Board material melamine coated with robust plastic edge



High quality locking bar



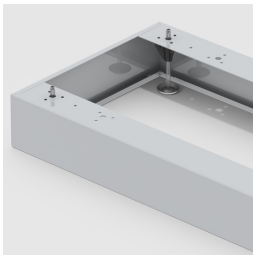
Pull-out proof shelf supports



Metal cup hinges with 240° opening angle



1 OH cabinet with handle or lock



Optionally with robust steel base



Resistance to warping due to 8 mm thick back wall



Carcass firmly doweled and glued ex works