

SUSPENSION FILING CABINET, 2 FH (W 80 CM/D 60 CM)

PRODUCT-DETAIL.MODEL-4162.620



STANDARD VERSION

Body, 3-layer particle board (E1), melamine coated, highly abrasion-resistant, with 1 mm plastic edge, thickness 19 mm.

Back panel, 3-layer chipboard (E1), melamine coated, highly abrasion-resistant, grooved all around, thickness 8 mm.

Front panels with 2 mm plastic edge and two handles. Hanging file drawers with parallel mechanism and central lock, maximum load capacity 44 kg.

Comes standard with folding base, PP-coated 3-layer chipboard (E1), 22 mm thick. Base height: 10 cm.

Note: 1 folder height (OH) \pm 38.4 cm

Free-standing cabinets from a height of 50H and free-standing cabinets with pull-outs (filing cabinets and drawer cabinets) must be fixed to the floor.

OPTIONS

- Decoration group 2
- Front decors price group 2
- Handle PG 2
- Handle PG 3
- Handle PG 4
- Steel base (chrome silver 9006)

CONFIGURATION

- Finishes | Finishes Price group 1, Finishes Price group 2

STANDARD

FEMB level:2017 (Level 3)

DIN EN 14074, DIN EN 14073-2, DIN EN 14073-3, DIN EN 16121, DIN EN 16122

TECHNICAL SPECIFICATIONS

FOLDER HEIGHT	2
WIDTH	80 cm
TOTAL HEIGHT	119 cm
DEPTH	70 cm
WEIGHT	10 kg

Our range of materials and colors can be found in the A2S material overview.



A2S-Furnishing Systems Ltd.
ASS-Einrichtungssysteme GmbH
info@ass.de
WWW.A2S.COM

SUSPENSION FILING CABINET, 2 FH (W 80 CM/D 60 CM)

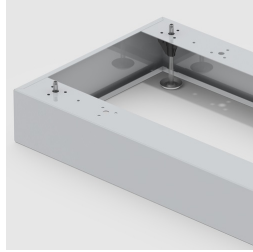
PRODUCT-DETAIL.MODEL-4162.620



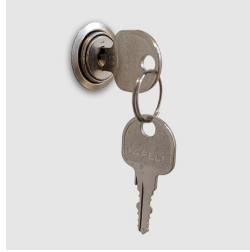
BENEFITS/SPECIALS



Board material melamine coated with robust plastic edge



Optionally with robust steel base



Cupboard with central locking



Resistance to warping due to 8 mm thick back wall



Including hanging file drawer