

COUNTER CABINETS, WITH RECESSED CENTER PANEL

PRODUCT-DETAIL.MODEL-4600.950



STANDARD VERSION

Body, 3-layer particle board (E1), melamine coated, highly abrasion-resistant, with 1 mm plastic edge, thickness 19 mm.

Back panel, 3-layer chipboard (E1), melamine coated, highly abrasion-resistant, grooved all around, thickness 8 mm.

Material body, base and doors made of 3-layer chipboard (E1), melamine coated, material thickness 19 mm. Body and shelves with 1 mm plastic edge, doors with 2 mm plastic edge.

Comes standard with folding base, PP-coated 3-layer chipboard (E1), 22 mm thick. Base height: 10 cm.

With recessed center panel, with 6 small compartments on top, lockable doors.

Free-standing cabinets from a height of 50H and free-standing cabinets with pull-outs (filing cabinets and drawer cabinets) must be fixed to the floor.

OPTIONS

- Decoration group 2
- Front decors price group 2
- Front HPL glued
- Shelf (additional)
- Handle PG 2
- Handle PG 3
- Handle PG 4
- Base adjustment
- Steel base (chrome silver 9006)

CONFIGURATION

- Finishes | Finishes Price group 1, Finishes Price group 2

STANDARD

DIN EN 14074, DIN EN 14073-2, DIN EN 14073-3, DIN EN 16121, DIN EN 16122

FEMB level:2017 (Level 3)

TECHNICAL SPECIFICATIONS

FOLDER HEIGHT	3
WIDTH	100 cm
TOTAL HEIGHT	110 cm
DEPTH	08 cm
NO. OF ADJUSTABLE SHELVES	2
NO. OF FIXED SHELVES	3
WEIGHT	97 kg

Our range of materials and colors can be found in the A2S material overview.



A2S-Furnishing Systems Ltd.
ASS-Einrichtungssysteme GmbH
info@ass.de
WWW.A2S.COM

COUNTER CABINETS, WITH RECESSED CENTER PANEL

PRODUCT-DETAIL.MODEL-4600.950



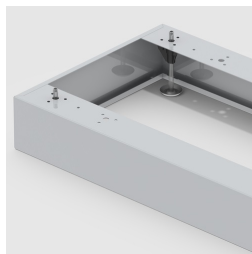
BENEFITS/SPECIALS



Board material melamine coated with robust plastic edge



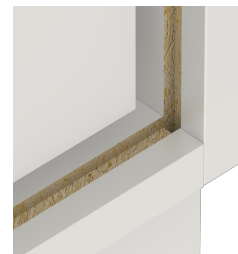
Sliding doors lockable



Optionally with robust steel base



Pull-out proof shelf supports



Resistance to warping due to 8 mm thick back wall



Carcass firmly doweled and glued ex works



Smooth sliding doors