

CHANGE CADDY WITH DOOR

PRODUCT-DETAIL.MODEL-4130.506



STANDARD VERSION

Material made of 3-layer chipboard (E1), melamine coated, with 2 mm plastic edge, material thickness 19 mm. Back panel thickness 8 mm. Rounded aluminum profile corners.

Includes invisible connection system by means of magnets.

Door with 270° opening angle. 2 shelves, in the lower compartment with 1 small and 1 large Tidy Box. Upper and middle compartment at folder height. The color assortment for the Tidy Boxes can be selected as desired. Please specify when ordering.

OPTIONS

- Decoration group 2
- Front decors price group 2
- Sides glued with magnetic laminate

STANDARD

FEMB level:2017 (Level 3)

TECHNICAL SPECIFICATIONS

WIDTH	38 cm
TOTAL HEIGHT	112 cm
DEPTH	60 cm
NO. OF FIXED SHELVES	2
WEIGHT	10 kg

Our range of materials and colors can be found in the A2S material overview.



A2S-Furnishing Systems Ltd.
ASS-Einrichtungssysteme GmbH
info@ass.de
WWW.A2S.COM

CHANGE CADDY WITH DOOR

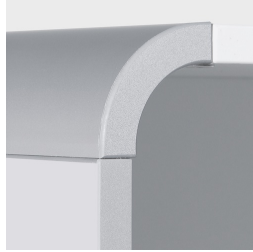
PRODUCT-DETAIL.MODEL-4130.506



BENEFITS/SPECIALS



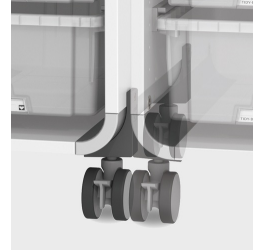
Board material melamine coated with robust plastic edge



Rounded aluminum profile corners



Mobile on 4 castors, 2 of which are lockable



Magnetic linking system



Optionally with magnetic pages



Tidy boxes for storing gloves, hats etc.