

# TOP SHELF, MULTIFUNCTIONAL BOARD SYSTEM, WITHOUT CENTER PANEL (W 120 CM) PRODUCT-DETAIL.MODEL-4731.800



## STANDARD VERSION

Body, 3-layer particle board (E1), melamine coated, highly abrasion-resistant, with 1 mm plastic edge, thickness 19 mm.

Back panel, 3-layer chipboard (E1), melamine coated, highly abrasion-resistant, grooved all around, thickness 8 mm.

Free-standing cabinets from a height of 50H and free-standing cabinets with pull-outs (filling cabinets and drawer cabinets) must be fixed to the floor.

With possibility to attach the aluminum guide rail for multifunctional panel system.

With center panel.

## OPTIONS

- Decoration group 2
- Shelf (additional)

## CONFIGURATION

- Finishes | Finishes Price group 1, Finishes Price group 2

## STANDARD

FEMB level:2017 (Level 3)

## TECHNICAL SPECIFICATIONS

WIDTH	120 cm
TOTAL HEIGHT	117/121 cm
DEPTH	37/42/41/02/01 cm
NO. OF ADJUSTABLE SHELVES	4
WEIGHT	10 kg

Our range of materials and colors can be found in the A2S material overview.



A2S-Furnishing Systems Ltd.  
ASS-Einrichtungssysteme GmbH  
info@ass.de  
WWW.A2S.COM

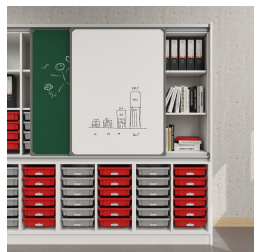
# TOP SHELF, MULTIFUNCTIONAL BOARD SYSTEM, WITHOUT CENTER PANEL (W 120 CM) PRODUCT-DETAIL.MODEL-4731.800



## BENEFITS/SPECIALS



Board material melamine coated with robust plastic edge



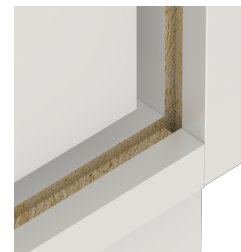
Sliding panel with aluminum guide rails and additional storage space behind the panels



Shelf attachment with tidy boxes behind the panels



Pull-out proof shelf supports



Resistance to warping due to 8 mm thick back wall



Carcass firmly doweled and glued ex works