

PROPERTY CABINET

PRODUCT-DETAIL.MODEL-4007.820



STANDARD VERSION

Body, 3-layer particle board (E1), melamine coated, highly abrasion-resistant, with 1 mm plastic edge, thickness 19 mm.

Rear panel, 3-layer chipboard (E1), melamine-coated, highly abrasion-resistant, grooved all around, thickness 8 mm.

Cabinet including base.

The color assortment for the Tidy Boxes can be selected as desired. Please specify when ordering.

Back panel, 3-layer chipboard (E1), melamine coated, highly abrasion-resistant, grooved all around, thickness 8 mm.

OPTIONS

- Decoration group 2
- with side handles
- Castors for cabinet base
- Back wall covered with cork
- Magnetic back panel, white
- Shelf (additional)
- Base adjustment
- Steel base (chrome silver 9006)

STANDARD

DIN EN 14074, DIN EN 14073-2, DIN EN 14073-3, DIN EN 16121, DIN EN 16122

FEMB level:2017 (Level 3)

TECHNICAL SPECIFICATIONS

FOLDER HEIGHT	2
WIDTH	138 cm
TOTAL HEIGHT	89 cm
DEPTH	48 cm
NO. OF COMPARTMENTS	3
NO. OF ADJUSTABLE SHELVES	2
WEIGHT	10 kg

Our range of materials and colors can be found in the A2S material overview.



A2S-Furnishing Systems Ltd.
ASS-Einrichtungssysteme GmbH
info@ass.de
WWW.A2S.COM

PROPERTY CABINET

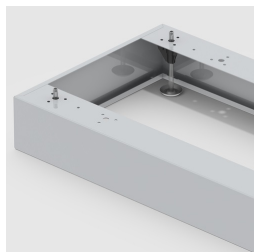
PRODUCT-DETAIL.MODEL-4007.820



BENEFITS/SPECIALS



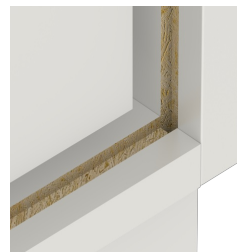
Board material melamine coated with robust plastic edge



Optionally with robust steel base



Mobile on 4 castors, 2 of which are lockable



Resistance to warping due to 8 mm thick back wall



Carcass firmly doweled and glued ex works



robust Tidy Boxes