

SCHOOL SATCHEL SHELVE, (W 70 CM/D 49 CM), 4 COMPARTMENTS

PRODUCT-DETAIL.MODEL-4033.220



STANDARD VERSION

Body, 3-layer particle board (E1), melamine coated, highly abrasion-resistant, with 1 mm plastic edge, thickness 19 mm.

Back panel, 3-layer chipboard (E1), melamine coated, highly abrasion-resistant, grooved all around, thickness 8 mm.

Comes standard with folding base, PP-coated 3-layer chipboard (E1), 22 mm thick. Base height: 10 cm.

Free-standing cabinets from a height of 50H and free-standing cabinets with pull-outs (filing cabinets and drawer cabinets) must be fixed to the floor. Shelf with center panel for satchels.

OPTIONS

- Decoration group 2
- Base adjustment
- with side handles
- with handles at the top
- Castors for cabinet base
- Steel base (chrome silver 9006)

CONFIGURATION

- Finishes | Finishes Price group 1, Finishes Price group 2

STANDARD

FEMB level:2017 (Level 3)

GS-zertifiziert gem. DIN EN 16121:2017-12, DIN EN 16122:2012-10

TECHNICAL SPECIFICATIONS

WIDTH	70 cm
TOTAL HEIGHT	121 cm
DEPTH	49 cm
INSIDE MEASURE COMPARTMENTS	03x32x47 cm
NO. OF COMPARTMENTS	4
NO. OF FIXED SHELVES	2
WEIGHT	30 kg

Our range of materials and colors can be found in the A2S material overview.



A2S-Furnishing Systems Ltd.
ASS-Einrichtungssysteme GmbH
info@ass.de
WWW.A2S.COM

SCHOOL SATCHEL SHELVES, (W 70 CM/D 49 CM), 4 COMPARTMENTS

PRODUCT-DETAIL.MODEL-4033.220



BENEFITS/SPECIALS



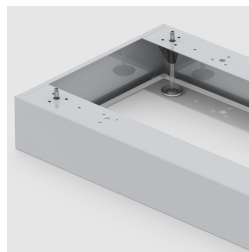
Board material melamine coated with robust plastic edge



Mobile on 4 castors, 2 of which are lockable



Compartments adapted to school satchels.



Optionally with robust steel base



Carcass firmly doweled and glued ex works