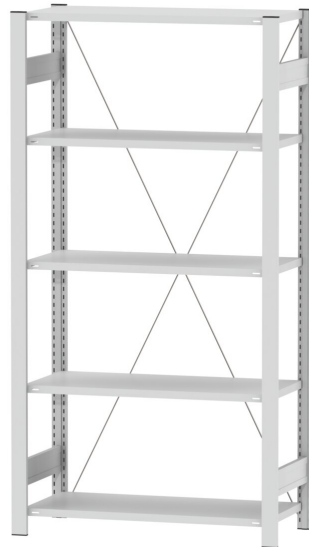


# STEEL BOOKCASE, BASIC SHELF PRODUCT-DETAIL.MODEL-6282



## STANDARD VERSION

Steel with 5 shelves. Load capacity per shelf 140 kg. Longitudinal stabilization by diagonal braces. Hole spacing 25 mm. All parts powder coated.

## OPTIONS

- 0602 Steel shelf, D 50 cm

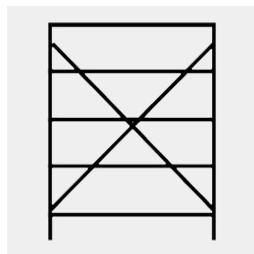
## TECHNICAL SPECIFICATIONS

WIDTH	107 cm
TOTAL HEIGHT	200 cm
DEPTH	60 cm
NO. OF ADJUSTABLE SHELVES	5
WEIGHT	32 kg

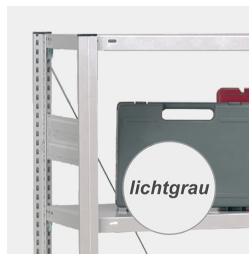
## BENEFITS/SPECIALS



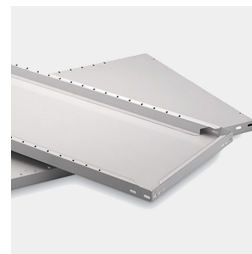
Plug-in system without screws



Diagonal struts increase resistance to distortion



Robust steel frame



Stable steel bases

Our range of materials and colors can be found in the A2S material overview.



A2S-Furnishing Systems Ltd.  
ASS-Einrichtungssysteme GmbH  
info@ass.de  
WWW.A2S.COM