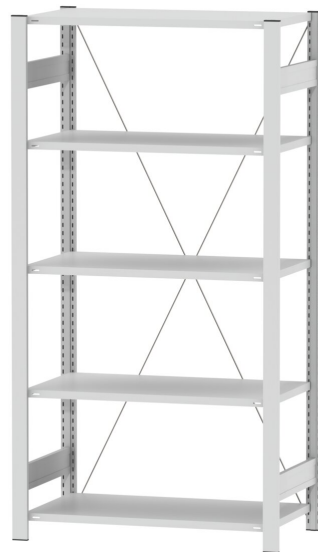


STEEL BOOKCASE, BASIC SHELF

PRODUCT-DETAIL.MODEL-6283



STANDARD VERSION

Steel with 5 shelves. Load capacity per shelf 140 kg. Longitudinal stabilization by diagonal braces. Hole spacing 25 mm. All parts powder coated.

OPTIONS

- 0603 Steel shelf, D 60 cm

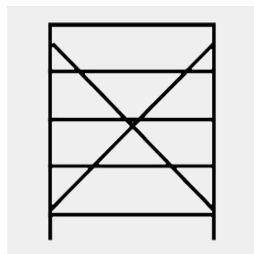
TECHNICAL SPECIFICATIONS

WIDTH	107 cm
TOTAL HEIGHT	200 cm
DEPTH	70 cm
NO. OF ADJUSTABLE SHELVES	5
WEIGHT	37 kg

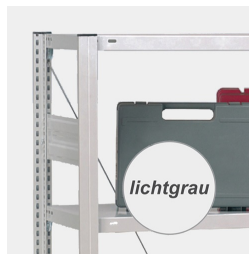
BENEFITS/SPECIALS



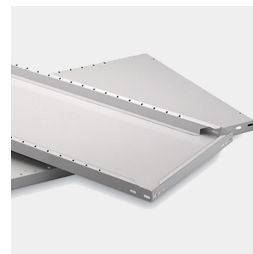
Plug-in system without screws



Diagonal struts increase resistance to distortion



Robust steel frame



Stable steel bases

Our range of materials and colors can be found in the A2S material overview.



A2S-Furnishing Systems Ltd.
ASS-Einrichtungssysteme GmbH
info@ass.de
WWW.A2S.COM