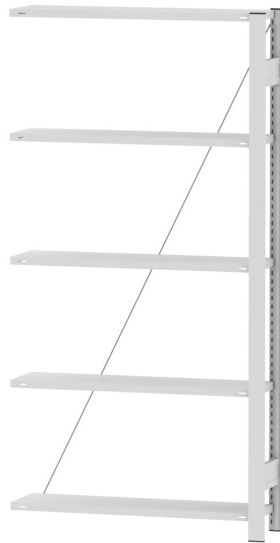


STEEL BOOKCASE, ADD-ON SHELF PRODUCT-DETAIL.MODEL-6285



STANDARD VERSION

Steel with 5 shelves. Load capacity per shelf 140 kg. Longitudinal stabilization by diagonal braces. Hole spacing 25 mm. All parts powder coated.

OPTIONS

- 0600 Steel shelf, D 30 cm

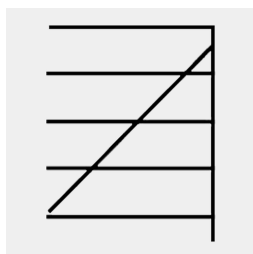
TECHNICAL SPECIFICATIONS

WIDTH	101 cm
TOTAL HEIGHT	200 cm
DEPTH	30 cm
NO. OF ADJUSTABLE SHELVES	5
WEIGHT	19 kg

BENEFITS/SPECIALS



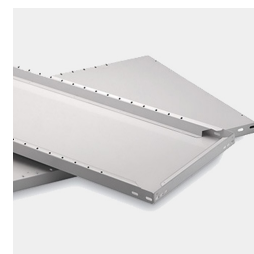
Plug-in system without screws



Diagonal brace increases resistance to distortion



Robust steel frame



Stable steel bases

Our range of materials and colors can be found in the A2S material overview.



Management System
ISO 14001:2015
ISO 9001:2015
www.a2s.com
© 2018/2019

**MADE
IN
GERMANY**

A2S-Furnishing Systems Ltd.
ASS-Einrichtungssysteme GmbH
info@ass.de
WWW.A2S.COM