

MONO-COLUMN TABLE, HEIGHT-ADJUSTABLE (W 90 CM/D 70 CM) BARREL SHAPE

PRODUCT-DETAIL.MODEL-7609.097



STANDARD VERSION

Tabletop, 3-layer chipboard (E1), melamine coated, highly abrasion-resistant, with 3 mm plastic edge, thickness: 25 mm.

Note: Table height specifications refer to a tabletop thickness of 25 mm.

Table mounting plate, steel: 3.0 mm.

Table column, pneumatic height adjustment, square: 67 x 67 mm. Height adjustment by means of safety hand release under the table top. Table column powder coated.

4-star powder coated base, with 4 double swivel locking casters with rubber coating.

Table top shape: barrel-shaped

OPTIONS

- Table top finishes price group 2
- Table top compact board 12 mm
- Front panel made of perforated steel plate
- Table top HPL glued
- Safe deposit drawer lockable

CONFIGURATION

- Finishes | Finishes Price group 1, Finishes Price group 2

STANDARD

GS-zertifiziert gem. DIN EN 15372

FEMB level:2017 (Level 3)

SIZES

TABLE WIDTH	90 cm
TABLE HEIGHT	111-110 cm
TABLE DEPTH	70 cm
STACKABILITY	-
NUMBER OF SEATS	1
WEIGHT	19 kg

Our range of materials and colors can be found in the A2S material overview.



A2S-Furnishing Systems Ltd.
ASS-Einrichtungssysteme GmbH
info@ass.de
WWW.A2S.COM

MONO-COLUMN TABLE, HEIGHT-ADJUSTABLE (W 90 CM/D 70 CM) BARREL SHAPE

PRODUCT-DETAIL.MODEL-7609.097



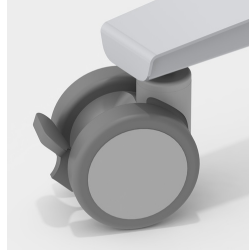
BENEFITS/SPECIALS



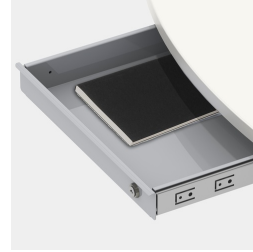
Melamine coated table top with robust plastic edge



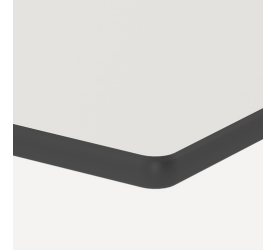
Safety hand release prevents unintentional triggering of height adjustment



Including 4 robust double swivel casters with total locking device



Optionally with lockable steel valuables drawer



Optional compact board as table top



Perforated plate front panel included



Infinitely variable height adjustment in the range 70-110 cm



Can also be used as a mobile lectern