

4-LEG TABLE, METAL WELDED (160X70 CM) PRODUCT-DETAIL.MODEL-1001.167



STANDARD VERSION

Tabletop, 3-layer chipboard (E1), melamine coated, highly abrasion-resistant, with 3 mm plastic edge, thickness: 25 mm.

Note: Table height specifications refer to a tabletop thickness of 25 mm.

4-leg base frame, side parts round tube: 40/2 mm, frame square tube welded and rounded: 40/20/2 mm. Frame epoxy coated, with plastic floor protector with level compensation.

Table top shape: rectangular

OPTIONS

- Table top finishes price group 2
- Tabletop with ASSODUR® edge
- Table top HPL glued
- Table top compact board 12 mm
- Table top with 40 mm corner radius
- Cable opening, Ø 80 mm
- 0905 Multimedia socket, Ø 80 mm
- 0187 Multimedia bar
- Cable opening, Ø 90 mm
- Mesh cable duct
- Felt floor protectors
- Teflon floor protector
- Fixed castor
- Table frame chrome plated
- Height adjustment 3-7
- CPU holder
- Insert plate for CPU holder
- Cable slack
- Cable clamp Ø 38-40 mm
- 6-fold gounded socket

CONFIGURATION

- Finishes | Steel colors Price group 1, Steel colors Price group 2, Finishes Price group 1, Finishes Price group 2

STANDARD

GS-zertifiziert gem. DIN EN 1729-1, DIN EN 1729-2, DIN EN 15372

FEMB level:2017 (Level 3)

Our range of materials and colors can be found in the A2S material overview.



A2S-Furnishing Systems Ltd.
ASS-Einrichtungssysteme GmbH
info@ass.de
WWW.A2S.COM

4-LEG TABLE, METAL WELDED (160X70 CM) PRODUCT-DETAIL.MODEL-1001.167



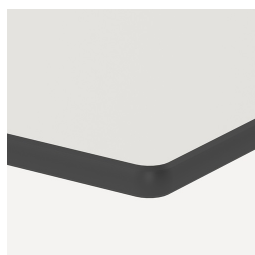
SIZES

SIZE	3	4	5	6	7	72 cm	75 cm
TABLE WIDTH	110 cm	110 cm	110 cm	110 cm	110 cm	110 cm	110 cm
TABLE HEIGHT	88 cm	78 cm	70 cm	71 cm	82 cm	72 cm	70 cm
TABLE DEPTH	70 cm	70 cm	70 cm	70 cm	70 cm	70 cm	70 cm
STACKABILITY	-	-	-	-	-	-	-
NUMBER OF SEATS	2	2	2	2	2	2	2
WEIGHT	29 kg	30 kg	30 kg	31 kg	32 kg	31 kg	31 kg

BENEFITS/SPECIALS



Melamine coated table top with robust plastic edge



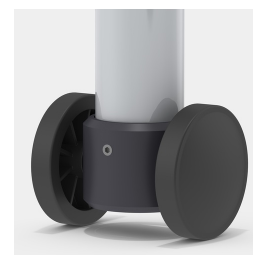
Optional compact board as table top



Optional table top with 40 mm corner radius



Floor saver with level compensation compensates for uneven floors



Optional frame mobile by means of 2 fixed castors



Optional melamine coated table top with ASSODUR® edge