

# 4-LEG TABLE, METAL WELDED (200X80 CM) PRODUCT-DETAIL.MODEL-1001.208



## STANDARD VERSION

Tabletop, 3-layer chipboard (E1), melamine coated, highly abrasion-resistant, with 3 mm plastic edge, thickness: 25 mm.

**Note:** Table height specifications refer to a tabletop thickness of 25 mm.

4-leg base frame, side parts round tube: 40/2 mm, frame square tube welded and rounded: 40/20/2 mm. Frame epoxy coated, with plastic floor protector with level compensation.

Table top shape: rectangular

## OPTIONS

- Table top finishes price group 2
- Table top HPL glued
- Table top compact board 12 mm
- Table top with 40 mm corner radius
- Cable opening, Ø 80 mm
- 0905 Multimedia socket, Ø 80 mm
- 0187 Multimedia bar
- Cable opening, Ø 90 mm
- Mesh cable duct
- Felt floor protectors
- Teflon floor protector
- Fixed castor
- Table frame chrome plated
- Height adjustment 3-7
- CPU holder
- Insert plate for CPU holder
- Cable slack
- Cable clamp Ø 38-40 mm
- 6-fold gounded socket

## CONFIGURATION

- Finishes | Steel colors Price group 1, Steel colors Price group 2, Finishes Price group 1, Finishes Price group 2

## STANDARD

GS-zertifiziert gem. DIN EN 1729-1, DIN EN 1729-2, DIN EN 15372

FEMB level:2017 (Level 3)

Our range of materials and colors can be found in the A2S material overview.



A2S-Furnishing Systems Ltd.  
ASS-Einrichtungssysteme GmbH  
info@ass.de  
WWW.A2S.COM

# 4-LEG TABLE, METAL WELDED (200X80 CM) PRODUCT-DETAIL.MODEL-1001.208



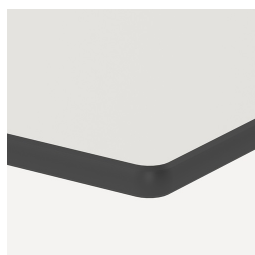
## SIZES

SIZE	3	4	5	6	7	72 cm	75 cm
TABLE WIDTH	200 cm	200 cm	200 cm	200 cm	200 cm	200 cm	200 cm
TABLE HEIGHT	88 cm	78 cm	70 cm	76 cm	82 cm	72 cm	70 cm
TABLE DEPTH	80 cm	80 cm	80 cm	80 cm	80 cm	80 cm	80 cm
STACKABILITY	-	-	-	-	-	-	-
NUMBER OF SEATS	3	3	3	3	3	3	3
WEIGHT	80 kg	81 kg	81 kg	82 kg	82 kg	81 kg	82 kg

## BENEFITS/SPECIALS



Melamine coated table top with robust plastic edge



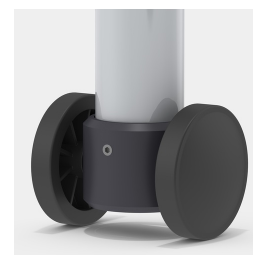
Optional compact board as table top



Optional table top with 40 mm corner radius



Floor saver with level compensation compensates for uneven floors



Optional frame mobile by means of 2 fixed castors