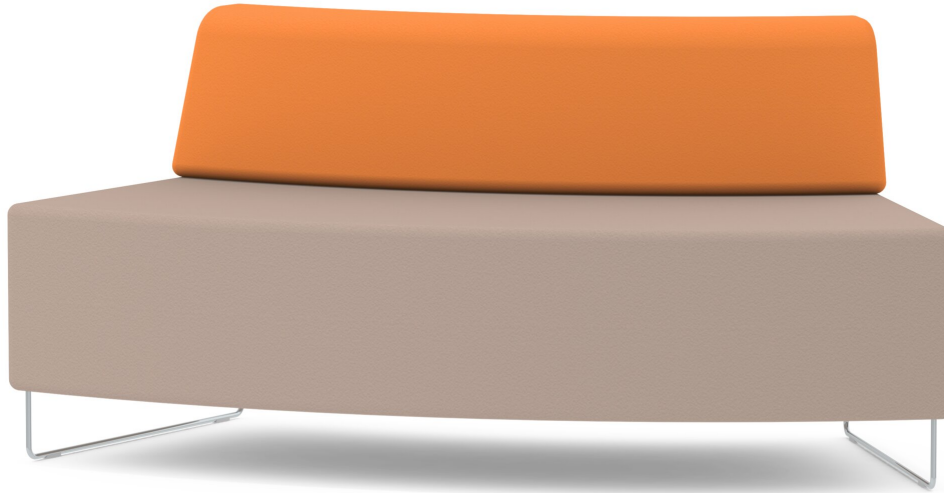


MODULA BENCH 45° CONVEX WITH BACKREST

PRODUCT-DETAIL.MODEL-9384.245



STANDARD VERSION

Upholstery over foam, colors of backrest and seat can be selected separately within a fabric group. Substructure made of robust 3-layer chipboard. Sturdy skid base with plastic floor protector, powder-coated in RAL 9006 as standard. Can be linked with other DOMINO elements.

OPTIONS

- Upholstery fabric TAFF B1 (P-a certified)
- Upholstery fabric TAFF B1 (price group 2)
- Upholstery fabric price group 3
- Upholstery fabric KUNSTLEDER B1 (P-a certified)
- Cover fabric ARTIFICIAL LEATHER B1 (price group 4)
- Upholstery fabric PROTEX B1 (P-a certified)
- Upholstery fabric PROTEX B1
- Frame chrome plated
- 9384.904 Floor fixing set, glued or screwed

STANDARD

FEMB level:2017 (Level 3)

GS-zertifiziert gem. DIN EN 16139, DIN EN 1023-1, DIN EN 1023-2, DIN EN 16121, DIN EN 15372

for cover fabrics B1, optional:

highest certified fire protection safety according to DIN 66084 P-a (paper cushion test)

TECHNICAL SPECIFICATIONS

TOTAL WIDTH	111 cm
TOTAL HEIGHT	70 cm
SEAT HEIGHT	40 cm
TOTAL DEPTH	79 cm
SEAT DEPTH	49 cm
WEIGHT	37 kg

Our range of materials and colors can be found in the A2S material overview.



A2S-Furnishing Systems Ltd.
ASS-Einrichtungssysteme GmbH
info@ass.de
WWW.A2S.COM

MODULA BENCH 45° CONVEX WITH BACKREST

PRODUCT-DETAIL.MODEL-9384.245



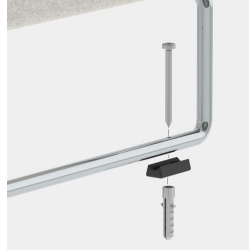
BENEFITS/SPECIALS



Stable sled frame optionally chrome-plated



Durable due to high quality workmanship



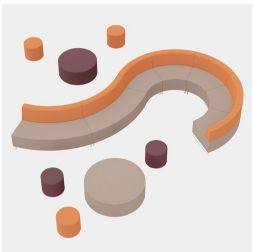
Optionally with screwed or glued floor fastening



Optionally fire protection certified according to DIN 66084 P-a with cover fabric B1



Can be individually extended with MAZE and straight DOMINO seating elements



Can be combined with CYLINDA, BLOC and COMBi series

FABRIC PROPERTIES

INTENSIVE Price group 1

100% polyester | flame retardant according to EN 1021 1&2 | 250 g/m² +/-5% | 100,000 Martindale tours | linting 5 | ÖKO-Tex 100

SKANDIA Price group 1

100% polyester | flame retardant according to EN 1021 1 | 245 g/m² +/-5% | 70,000 Martindale tours | linting 4-5 | ÖKO-Tex 100

FLEECE Price group 1

100% polyester | flame retardant BS 5852:Part1:1979 (cigarette) | 402 g/m² | 100,000 Martindale tours | linting 4 | ÖKO-Tex 100

TAFF B1 Price group 2

100% polyester | flame retardant according to EN 1021 1&2, DIN 4102 B1 | 260 g/m² +/-5% | 70,000 Martindale tours | linting 5 | ÖKO-Tex 100

WOOL Price group 3

100% wool | flame retardant according to EN 1021 1&2 | 460 g/m² +/-5% | 35,000 Martindale tours | linting 4 | tested for harmful substances

PROTEX Price group 3

surface 100% vinyl / fabric 100% polyester | flame retardant according to EN 1021 1&2, DIN 4102 B2 | 685 g/m² | 300,000 Martindale tours | no linting | wipeable with soap and water, water repellent, antibacterial, anti-static, stain resistant, resistant to blood and urine, mold resistant backing and surface, resistant to disinfectants

ARTIFICIAL LEATHER Price group 3

surface 100% polyurethane/ fabric 65% polyester, 35% cotton | flame retardant according to EN 1021-1 | 435 g/m² +/-10% | 100,000 Martindale tours | no linting | tested for harmful substances

ARTIFICIAL LEATHER B1 Price group 4

85% PVC compound, 15% cotton knit | flame retardant according to EN 1021 1&2, DIN 4102 B1 | weight 780 +/-50 g/m² | 75,000 Martindale tours | no linting | tested for harmful substances | resistant to blood and urine, resistant to disinfectants