

# HINGED DOOR CABINET, 4 FH (W 41 CM/D 60 CM), 1 DOOR, LOCKABLE

## PRODUCT-DETAIL.MODEL-4402.240



### STANDARD VERSION

Body, 3-layer particle board (E1), melamine coated, highly abrasion-resistant, with 1 mm plastic edge, thickness 19 mm.  
Back panel, 3-layer chipboard (E1), melamine coated, highly abrasion-resistant, grooved all around, thickness 8 mm.  
Doors, 3-layer particle board (E1), melamine coated, highly abrasion resistant, with 2 mm plastic edge, thickness 19 mm.  
Arch handle chrome matt (96mm).

**Note:** 1 folder height (OH)  $\pm$  38.4 cm

Free-standing cabinets from a height of 50H and free-standing cabinets with pull-outs (filing cabinets and drawer cabinets) must be fixed to the floor. Comes standard with folding base, PP-coated 3-layer chipboard (E1), 22 mm thick. Base height: 10 cm.

### OPTIONS

- Decoration group 2
- Front decors price group 2
- Front HPL glued
- Shelf (additional)
- Handle PG 2
- Handle PG 3
- Handle PG 4
- Base adjustment
- Steel base (chrome silver 9006)

### CONFIGURATION

- Finishes | Finishes Price group 1, Finishes Price group 2

### STANDARD

DIN EN 14074, DIN EN 14073-2, DIN EN 14073-3, DIN EN 16121, DIN EN 16122

FEMB level:2017 (Level 3)

### TECHNICAL SPECIFICATIONS

FOLDER HEIGHT	4
WIDTH	41 cm
TOTAL HEIGHT	170 cm
DEPTH	70 cm
NO. OF COMPARTMENTS	4
NO. OF ADJUSTABLE SHELVES	3
WEIGHT	08 kg

Our range of materials and colors can be found in the A2S material overview.



A2S-Furnishing Systems Ltd.  
ASS-Einrichtungssysteme GmbH  
info@ass.de  
WWW.A2S.COM

# HINGED DOOR CABINET, 4 FH (W 41 CM/D 60 CM), 1 DOOR, LOCKABLE

PRODUCT-DETAIL.MODEL-4402.240



## BENEFITS/SPECIALS



Board material melamine coated with robust plastic edge



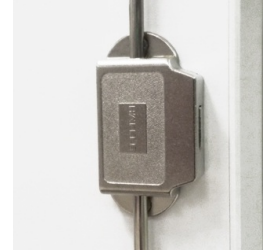
1 OH cabinet with handle or lock



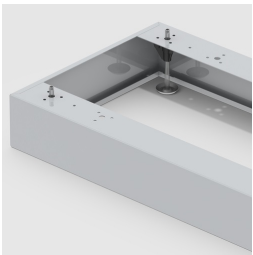
Metal cup hinges with 240° opening angle



Pull-out proof shelf supports



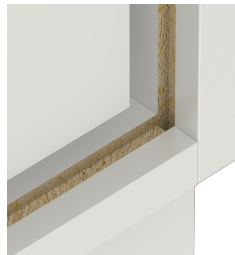
High quality locking bar



Optionally with robust steel base



Carcass firmly doweled and glued ex works



Resistance to warping due to 8 mm thick back wall