

# HINGED DOOR WALL CABINET, 2 FH (W 120CM/D 44 CM), LOCKABLE ON BOTH SIDES WITH CENTER PANEL

PRODUCT-DETAIL.MODEL-4937.820



## STANDARD VERSION

Body, 3-layer particle board (E1), melamine coated, highly abrasion-resistant, with 1 mm plastic edge, thickness 19 mm.  
Back panel, 3-layer chipboard (E1), melamine coated, highly abrasion-resistant, grooved all around, thickness 8 mm.  
Doors, 3-layer particle board (E1), melamine coated, highly abrasion resistant, with 2 mm plastic edge, thickness 19 mm.  
Arch handle chrome matt (96mm).

**Note:** 1 folder height (OH)  $\pm$  38.4 cm

Free-standing cabinets from a height of 50H and free-standing cabinets with pull-outs (filing cabinets and drawer cabinets) must be fixed to the floor.

## OPTIONS

- Decoration group 2
- Front decors price group 2
- Front HPL glued
- Shelf (additional)
- Handle PG 2
- Handle PG 3
- Handle PG 4

## CONFIGURATION

- Finishes | Finishes Price group 1, Finishes Price group 2

## STANDARD

DIN EN 14074, DIN EN 14073-2, DIN EN 14073-3, DIN EN 16121, DIN EN 16122

FEMB level:2017 (Level 3)

## TECHNICAL SPECIFICATIONS

FOLDER HEIGHT	2
WIDTH	120 cm
TOTAL HEIGHT	79 cm
DEPTH	44 cm
NO. OF COMPARTMENTS	4
NO. OF ADJUSTABLE SHELVES	2
WEIGHT	02 kg

Our range of materials and colors can be found in the A2S material overview.



A2S-Furnishing Systems Ltd.  
ASS-Einrichtungssysteme GmbH  
info@ass.de  
WWW.A2S.COM

# HINGED DOOR WALL CABINET, 2 FH (W 120CM/D 44 CM), LOCKABLE ON BOTH SIDES WITH CENTER PANEL

PRODUCT-DETAIL.MODEL-4937.820



## BENEFITS/SPECIALS



Board material melamine coated with robust plastic edge



1 OH cabinet with handle or lock



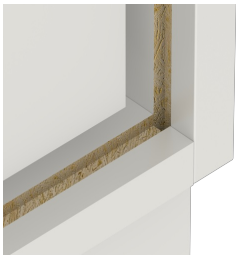
Metal cup hinges with 240° opening angle



Pull-out proof shelf supports



Carcass firmly doweled and glued ex works



Resistance to warping due to 8 mm thick back wall