

4-LEG TABLE, METAL WELDED (70X70 CM) S-SHAPE PRODUCT-DETAIL.MODEL-1016.077



STANDARD VERSION

Tabletop, 3-layer chipboard (E1), melamine coated, highly abrasion-resistant, with 3 mm plastic edge, thickness: 25 mm.

Note: Table height specifications refer to a tabletop thickness of 25 mm.

Corner radius: 40 mm.

4-leg base frame, side parts round tube: 40/2 mm, frame square tube welded and rounded: 40/20/2 mm. Frame epoxy coated, with plastic floor protector with level compensation.

Table top shape: rectangular, S-shape

OPTIONS

- Table top finishes price group 2
- Table top HPL glued
- Felt floor protectors
- Teflon floor protector
- Fixed castor
- Table frame chrome plated
- Height adjustment 3-7

CONFIGURATION

- Finishes | Steel colors Price group 1, Steel colors Price group 2, Finishes Price group 1, Finishes Price group 2

STANDARD

GS-zertifiziert gem. DIN EN 1729-1, DIN EN 1729-2, DIN EN 15372

FEMB level:2017 (Level 3)

Our range of materials and colors can be found in the A2S material overview.



A2S-Furnishing Systems Ltd.
ASS-Einrichtungssysteme GmbH
info@ass.de
WWW.A2S.COM

4-LEG TABLE, METAL WELDED (70X70 CM) S-SHAPE PRODUCT-DETAIL.MODEL-1016.077



SIZES

SIZE	3	4	5	6	7	72 cm	75 cm
TABLE WIDTH	Y · cm	Y · cm	Y · cm	Y · cm	Y · cm	Y · cm	Y · cm
TABLE HEIGHT	0A cm	7E cm	Y · cm	Y7 cm	AY cm	Y2 cm	Y0 cm
TABLE DEPTH	Y · cm	Y · cm	Y · cm	Y · cm	Y · cm	Y · cm	Y · cm
PLAN DIMENSION	Y0xY0 cm	Y0xY0 cm	Y0xY0 cm	Y0xY0 cm	Y0xY0 cm	Y0xY0 cm	Y0xY0 cm
STACKABILITY	-	-	-	-	-	-	-
NUMBER OF SEATS	1	1	1	1	1	1	1
WEIGHT	13 kg	1E kg	1E kg	10 kg	17 kg	10 kg	10 kg

BENEFITS/SPECIALS



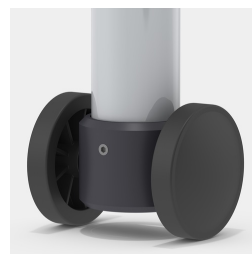
Melamine coated table top with robust plastic edge



Optional table top with 40 mm corner radius



Floor saver with level compensation compensates for uneven floors



Optional frame mobile by means of 2 fixed castors