

HINGED DOOR CABINET, 3 FH (W 120 CM/D 60 CM), 2 DOOR

PRODUCT-DETAIL.MODEL-4406.830



STANDARD VERSION

Body, 3-layer particle board (E1), melamine coated, highly abrasion-resistant, with 1 mm plastic edge, thickness 19 mm.

Back panel, 3-layer chipboard (E1), melamine coated, highly abrasion-resistant, grooved all around, thickness 8 mm.

Doors, 3-layer particle board (E1), melamine coated, highly abrasion resistant, with 2 mm plastic edge, thickness 19 mm.

Arch handle chrome matt (96mm).

Note: 1 folder height (OH) \pm 38.4 cm

Free-standing cabinets from a height of 50H and free-standing cabinets with pull-outs (filing cabinets and drawer cabinets) must be fixed to the floor.

Comes standard with folding base, PP-coated 3-layer chipboard (E1), 22 mm thick. Base height: 10 cm.

OPTIONS

- Decoration group 2
- Front decors price group 2
- Front HPL glued
- Castors for cabinet base
- Shelf (additional)
- Handle PG 2
- Handle PG 3
- Handle PG 4
- with side handles
- with handles at the top
- Base adjustment
- Steel base (chrome silver 9006)

CONFIGURATION

- Finishes | Finishes Price group 1, Finishes Price group 2

STANDARD

DIN EN 14074, DIN EN 14073-2, DIN EN 14073-3, DIN EN 16121, DIN EN 16122

FEMB level:2017 (Level 3)

TECHNICAL SPECIFICATIONS

FOLDER HEIGHT	3
WIDTH	120 cm
TOTAL HEIGHT	127 cm
HEIGHT OF COMBI TOP CABINET	110 cm
DEPTH	70 cm
NO. OF ADJUSTABLE SHELVES	4
WEIGHT	93 kg

Our range of materials and colors can be found in the A2S material overview.



A2S-Furnishing Systems Ltd.
ASS-Einrichtungssysteme GmbH
info@ass.de
WWW.A2S.COM

HINGED DOOR CABINET, 3 FH (W 120 CM/D 60 CM), 2 DOOR

PRODUCT-DETAIL.MODEL-4406.830



BENEFITS/SPECIALS



Board material melamine coated with robust plastic edge



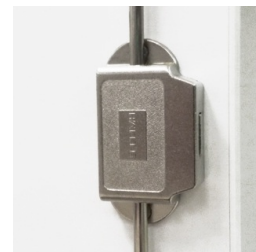
1 OH cabinet with handle or lock



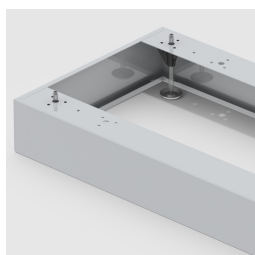
Metal cup hinges with 240° opening angle



Pull-out proof shelf supports



High quality locking bar



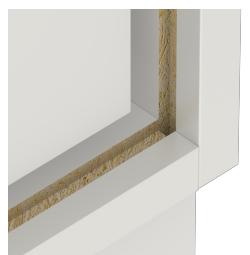
Optionally with robust steel base



Mobile on 4 castors, 2 of which are lockable



Carcass firmly doweled and glued ex works



Resistance to warping due to 8 mm thick back wall