

# DOUBLE DOOR CABINET (D 44 CM)

## PRODUCT-DETAIL.MODEL-4431.820



### STANDARD VERSION

Body, 3-layer particle board (E1), melamine coated, highly abrasion-resistant, with 1 mm plastic edge, thickness 19 mm.  
Rear panel, 3-layer chipboard (E1), melamine-coated, highly abrasion-resistant, grooved all around, thickness 8 mm.  
Back panel, 3-layer chipboard (E1), melamine coated, highly abrasion-resistant, grooved all around, thickness 8 mm.  
Doors, 3-layer particle board (E1), melamine coated, highly abrasion resistant, with 2 mm plastic edge, thickness 19 mm.  
Arch handle chrome matt

**Note:** 1 folder height (OH)  $\pm$  38.4 cm

Cabinet including base.

### OPTIONS

- Decoration group 2
- Front decors price group 2
- Front HPL glued
- Castors for cabinet base
- Shelf (additional)
- Handle PG 2
- Base adjustment
- Steel base (chrome silver 9006)

### STANDARD

DIN EN 14074, DIN EN 14073-2, DIN EN 14073-3, DIN EN 16121, DIN EN 16122

FEMB level:2017 (Level 3)

### TECHNICAL SPECIFICATIONS

FOLDER HEIGHT	2
WIDTH	120 cm
TOTAL HEIGHT	119 cm
HEIGHT OF COMBI TOP CABINET	77 cm
DEPTH	44 cm
NO. OF ADJUSTABLE SHELVES	1
WEIGHT	7 kg

Our range of materials and colors can be found in the A2S material overview.



A2S-Furnishing Systems Ltd.  
ASS-Einrichtungssysteme GmbH  
info@ass.de  
WWW.A2S.COM

# DOUBLE DOOR CABINET (D 44 CM) PRODUCT-DETAIL.MODEL-4431.820



## BENEFITS/SPECIALS



Board material melamine  
coated with robust plastic edge



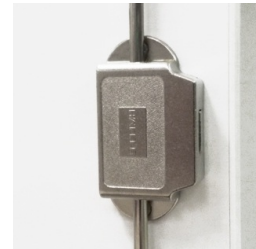
1 OH cabinet with handle or  
lock



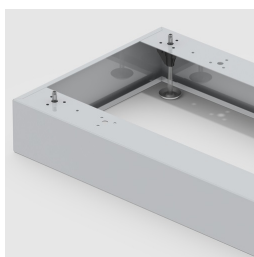
Metal cup hinges with 240°  
opening angle



Pull-out proof shelf supports



High quality locking bar



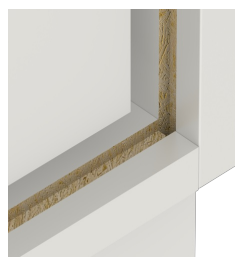
Optionally with robust steel  
base



Mobile on 4 castors, 2 of which  
are lockable



Carcass firmly doweled and  
glued ex works



Resistance to warping due to 8  
mm thick back wall