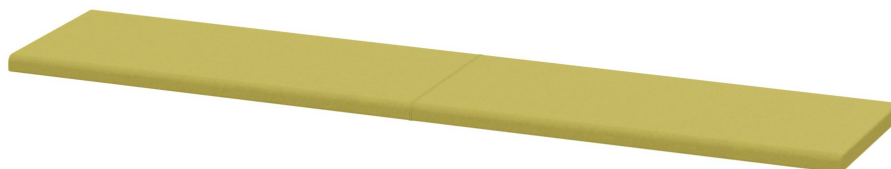


# SOLID BENCH CUSHION (187X39 CM) PRODUCT-DETAIL.MODEL-3104.194



## STANDARD VERSION

Padded bench support, MDF support plate. Foam flame retardant, certified according to BS 5852-2 Crib 5. Fixation on SOLID bench by Velcro.

## OPTIONS

- Upholstery fabric price group 2
- Upholstery fabric price group 3
- Upholstery fabric price group 4

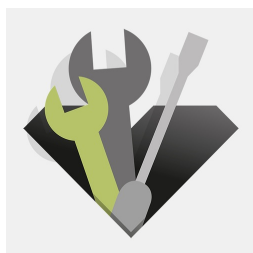
## CONFIGURATION

- Upholstery fabrics | INTENSIVE Price group 1, SKANDIA Price group 1, FLEECE Price group 1, TAFF B1 Price group 2, WOOL Price group 3, PROTEX Price group 3, ARTIFICIAL LEATHER Price group 3, ARTIFICIAL LEATHER B1 Price group 4

## TECHNICAL SPECIFICATIONS

TOTAL WIDTH	187 cm
SEAT WIDTH	187 cm
TOTAL HEIGHT	8 cm
TOTAL DEPTH	39 cm
SEAT DEPTH	39 cm
WEIGHT	11 kg

## BENEFITS/SPECIALS



Can be retrofitted at any time

Our range of materials and colors can be found in the A2S material overview.



A2S-Furnishing Systems Ltd.  
ASS-Einrichtungssysteme GmbH  
info@ass.de  
WWW.A2S.COM

# SOLID BENCH CUSHION (187X39 CM)

## PRODUCT-DETAIL.MODEL-3104.194



### FABRIC PROPERTIES

#### **INTENSIVE Price group 1**

100% polyester | flame retardant according to EN 1021 1&2 | 250 g/m<sup>2</sup> +/-5% | 100,000 Martindale tours | linting 5 | ÖKO-Tex 100

#### **SKANDIA Price group 1**

100% polyester | flame retardant according to EN 1021 1 | 245 g/m<sup>2</sup> +/-5% | 70,000 Martindale tours | linting 4-5 | ÖKO-Tex 100

#### **FLEECE Price group 1**

100% polyester | flame retardant BS 5852:Part1:1979 (cigarette) | 402 g/m<sup>2</sup> | 100,000 Martindale tours | linting 4 | ÖKO-Tex 100

#### **TAFF B1 Price group 2**

100% polyester | flame retardant according to EN 1021 1&2, DIN 4102 B1 | 260 g/m<sup>2</sup> +/-5% | 70,000 Martindale tours | linting 5 | ÖKO-Tex 100

#### **WOOL Price group 3**

100% wool | flame retardant according to EN 1021 1&2 | 460 g/m<sup>2</sup> +/-5% | 35,000 Martindale tours | linting 4 | tested for harmful substances

#### **PROTEX Price group 3**

surface 100% vinyl / fabric 100% polyester | flame retardant according to EN 1021 1&2, DIN 4102 B2 | 685 g/m<sup>2</sup> | 300,000 Martindale tours | no linting | wipeable with soap and water, water repellent, antibacterial, anti-static, stain resistant, resistant to blood and urine, mold resistant backing and surface, resistant to disinfectants

#### **ARTIFICIAL LEATHER Price group 3**

surface 100% polyurethane/ fabric 65% polyester, 35% cotton | flame retardant according to EN 1021-1 | 435 g/m<sup>2</sup> +/-10% | 100,000 Martindale tours | no linting | tested for harmful substances

#### **ARTIFICIAL LEATHER B1 Price group 4**

85% PVC compound, 15% cotton knit | flame retardant according to EN 1021 1&2, DIN 4102 B1 | weight 780+/-50 g/m<sup>2</sup> | 75,000 Martindale tours | no linting | tested for harmful substances | resistant to blood and urine, resistant to disinfectants