

SIDE FOLDING TABLE (140X70 CM) PRODUCT-DETAIL.MODEL-3660.147



STANDARD VERSION

Tabletop, 3-layer chipboard (E1), melamine coated, highly abrasion-resistant, with 3 mm plastic edge, thickness: 25 mm.

Note: Table height specifications refer to a tabletop thickness of 25 mm.

2-hand safety operation under the table top as a trigger for lateral folding down as well as simultaneous securing of the table top in vertical and horizontal position.

Y-shape base, side parts round tube: 50/2 mm. Cross bar round tube: 40/2 mm. Outrigger oval tube: 35/15/2 mm. Frame epoxy coated, with 4 double swivel castors with rubber coating and total locking.

OPTIONS

- Table top finishes price group 2
- Table top HPL glued
- Tabletop with ASSODUR® edge
- Table top glued with solid wood edge glue-in crowned

CONFIGURATION

- الديكورات
- ألوان الإطار

STANDARD

GS-zertifiziert gem. DIN EN 15372

FEMB level:2017 (Level 3)

SIZES

TABLE WIDTH	140 cm	140 cm
TABLE HEIGHT	70 cm	70 cm
TABLE DEPTH	70 cm	70 cm
STACKABILITY	-	-
NUMBER OF SEATS	4	4
WEIGHT	30 kg	30 kg

Our range of materials and colors can be found in the A2S material overview.



A2S-Furnishing Systems Ltd.
ASS-Einrichtungssysteme GmbH
info@ass.de
WWW.A2S.COM

SIDE FOLDING TABLE (140X70 CM) PRODUCT-DETAIL.MODEL-3660.147



BENEFITS/SPECIALS



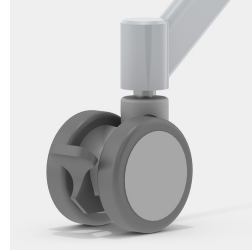
Melamine coated table top with robust plastic edge



Optional melamine coated table top with ASSODUR® edge



Optional melamine coated table top with solid wood edge



Including 4 robust double swivel casters with total locking device



Triggering of the folding function by means of 2-hand safety operation



Space saving nestable