

# 4-LEG FOLDING TABLE (80X80 CM) PRODUCT-DETAIL.MODEL-3690.088



## STANDARD VERSION

Tabletop, 3-layer chipboard (E1), melamine coated, highly abrasion-resistant, with 3 mm plastic edge, thickness: 25 mm.

**Note:** Table height specifications refer to a tabletop thickness of 25 mm.

4-leg base, round tube: 30/2 mm, foldable. Frame chrome-plated, with plastic floor protector with level compensation.

## OPTIONS

- Table top finishes price group 2
- Table top HPL glued
- Tabletop with ASSODUR® edge
- Table top glued with solid wood edge glue-in crowned

## CONFIGURATION

- الديكورات
- ألوان الإطار

## STANDARD

FEMB level:2017 (Level 3)

GS-zertifiziert gem. DIN EN 15372

## SIZES

TABLE WIDTH	80 cm
TABLE HEIGHT	77 cm
TABLE DEPTH	80 cm
STACKABILITY	-
NUMBER OF SEATS	1
WEIGHT	3 kg

Our range of materials and colors can be found in the A2S material overview.



A2S-Furnishing Systems Ltd.  
ASS-Einrichtungssysteme GmbH  
info@ass.de  
WWW.A2S.COM

# 4-LEG FOLDING TABLE (80X80 CM) PRODUCT-DETAIL.MODEL-3690.088



## BENEFITS/SPECIALS



Melamine coated table top with robust plastic edge



Optional melamine coated table top with ASSODUR® edge



Optional melamine coated table top with solid wood edge



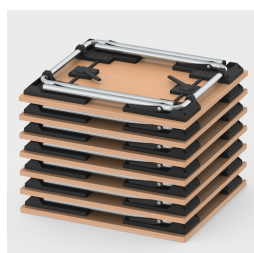
Floor protector with level compensation: compensates for uneven floors



Stacking protectors protect the table top from scratch marks



Easy folding of the table legs



Stackable up to 16 tables