

4-LEG FOLDING TABLE (180X90 CM) PRODUCT-DETAIL.MODEL-3930.189



STANDARD VERSION

4-leg base frame, round tube: 40/2 mm, foldable incl. hard rubber stacking protectors. Beveled aluminum frame under table top, natural anodized. Frame epoxy coated, with plastic floor protectors with level compensation.
Table top, chipboard, HPL glued, highly abrasion-resistant, with 3 mm plastic edge, thickness: 25 mm

Note: Table height specifications refer to a top thickness of 25 mm.

Note: With optional solid wood frame Table top made of 3-layer chipboard (E1), melamine-coated

OPTIONS

- Table top finishes price group 2
- Glue-in crowned
- Solid wood frame, recessed (for directly coated chipboard)
- Table top HPL glued
- Felt floor protectors
- Teflon floor protector
- Table frame chrome plated

CONFIGURATION

- الديكورات
- ألوان الإطار
- ألوان الإطار

STANDARD

GS-zertifiziert gem. DIN EN 15372

FEMB level:2017 (Level 3)

Our range of materials and colors can be found in the A2S material overview.



A2S-Furnishing Systems Ltd.
ASS-Einrichtungssysteme GmbH
info@ass.de
WWW.A2S.COM

4-LEG FOLDING TABLE (180X90 CM) PRODUCT-DETAIL.MODEL-3930.189



SIZES

TABLE WIDTH	180 cm	180 cm
TABLE HEIGHT	72 cm	70 cm
TABLE DEPTH	90 cm	90 cm
STACKABILITY	16 pcs.	16 pcs.
NUMBER OF SEATS	6	6
WEIGHT	81 kg	81 kg

BENEFITS/SPECIALS



Melamine coated table top with robust plastic edge



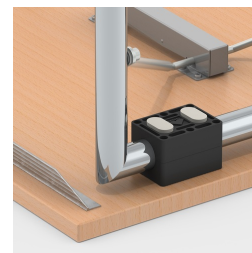
Optional melamine coated table top with solid wood edge



Optionally with recessed solid wood frame



Floor protector with level compensation: compensates for uneven floors



Stacking protectors protect the table top from scratch marks



Easy folding of the table legs



Stackable up to 16 tables