

# FOLDING TABLE (120X70 CM) PRODUCT-DETAIL.MODEL-3920.127



## STANDARD VERSION

Center column base with double tube, side parts round tube: 30/2 mm, foldable incl. hard rubber stacking protectors. Beveled aluminum frame under table top, natural anodized. Frame epoxy coated, with plastic floor protectors.

Tabletop, 3-layer chipboard (E1), melamine coated, highly abrasion-resistant, with 3 mm plastic edge, thickness: 25 mm.

**Note:** Table height specifications refer to a tabletop thickness of 25 mm.

## OPTIONS

- Table top finishes price group 2
- Table top HPL glued
- Table top glued with solid wood edge glue-in crowned
- Solid wood frame, recessed (for directly coated chipboard)
- Felt floor protectors
- Table frame chrome plated

## CONFIGURATION

- الديكورات
- ألوان الإطار
- ألوان الإطار

## STANDARD

GS-zertifiziert gem. DIN EN 15372

FEMB level:2017 (Level 3)

## SIZES

TABLE WIDTH	120 cm	120 cm
TABLE HEIGHT	77 cm	70 cm
TABLE DEPTH	70 cm	70 cm
STACKABILITY	16 pcs.	16 pcs.
NUMBER OF SEATS	2	2
WEIGHT	24 kg	20 kg

Our range of materials and colors can be found in the A2S material overview.



A2S-Furnishing Systems Ltd.  
ASS-Einrichtungssysteme GmbH  
info@ass.de  
WWW.A2S.COM

# FOLDING TABLE (120X70 CM) PRODUCT-DETAIL.MODEL-3920.127



## BENEFITS/SPECIALS



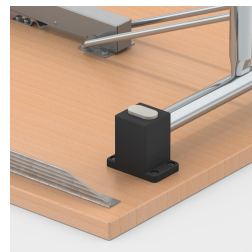
Melamine coated table top with robust plastic edge



Optional melamine coated table top with solid wood edge



Optionally with recessed solid wood frame



Stacking protectors protect the table top from scratch marks



Easy folding of the table legs



Stackable up to 16 tables