

# 90° CORNER EXTENSION TABLE, METAL DISMOUNTABLE (180X130)

PRODUCT-DETAIL.MODEL-2033.188



## STANDARD VERSION

Tabletop, 3-layer chipboard (E1), melamine coated, highly abrasion-resistant, with 3 mm plastic edge, thickness: 25 mm.

**Note:** Table height specifications refer to a tabletop thickness of 25 mm.

4-leg base frame, side parts round tube: 40/2 mm, frame square tube rounded: 40/20/2 mm. Frame dismantlable, epoxy coated, with plastic floor protector with level compensation.

Table top shape: 90° approach left

## OPTIONS

- Table top finishes price group 2
- Table top HPL glued
- Table top with 40 mm corner radius
- Cable opening, Ø 80 mm
- Cable opening, Ø 90 mm
- 0187 Multimedia bar
- Mesh cable duct
- CPU holder
- Insert plate for CPU holder
- Felt floor protectors
- Cable slack
- Cable clamp Ø 38-40 mm
- Table frame chrome plated
- Height adjustment 10 cm
- Without side parts
- 6-fold gounded socket

## CONFIGURATION

- Finishes | Steel colors Price group 1, Steel colors Price group 2, Finishes Price group 1, Finishes Price group 2

## STANDARD

GS-zertifiziert gem. DIN EN 1729-1, DIN EN 1729-2, DIN EN 15372

FEMB level:2017 (Level 3)

Our range of materials and colors can be found in the A2S material overview.



A2S-Furnishing Systems Ltd.  
ASS-Einrichtungssysteme GmbH  
info@ass.de  
WWW.A2S.COM

# 90° CORNER EXTENSION TABLE, METAL DISMOUNTABLE (180X130)

PRODUCT-DETAIL.MODEL-2033.188



## SIZES

TABLE WIDTH	180 cm	180 cm
TABLE HEIGHT	77 cm	70 cm
TABLE DEPTH	80 cm	80 cm
PLAN DIMENSION	180 x 130 cm	180 x 130 cm
ADJUSTMENT DIMENSION	80 cm	80 cm
STACKABILITY	-	-
NUMBER OF SEATS	1	1
WEIGHT	8 kg	8 kg

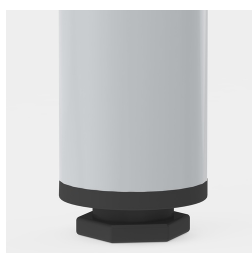
## BENEFITS/SPECIALS



Melamine coated table top with  
robust plastic edge



Optional table top with 40 mm  
corner radius



Floor saver with level  
compensation compensates for  
uneven floors