

# 90° CORNER EXTENSION TABLE, METAL DISMOUNTABLE (200X130)

PRODUCT-DETAIL.MODEL-2033.208



## STANDARD VERSION

Tabletop, 3-layer chipboard (E1), melamine coated, highly abrasion-resistant, with 3 mm plastic edge, thickness: 25 mm.

**Note:** Table height specifications refer to a tabletop thickness of 25 mm.

4-leg base frame, side parts round tube: 40/2 mm, frame square tube rounded: 40/20/2 mm. Frame dismountable, epoxy coated, with plastic floor protector with level compensation.

Table top shape: 90° approach left

## OPTIONS

- Table top finishes price group 2
- Table top HPL glued
- Table top with 40 mm corner radius
- Cable opening, Ø 80 mm
- Cable opening, Ø 90 mm
- 0187 Multimedia bar
- Mesh cable duct
- CPU holder
- Insert plate for CPU holder
- Felt floor protectors
- Cable slack
- Cable clamp Ø 38-40 mm
- Table frame chrome plated
- Height adjustment 10 cm
- Without side parts
- 6-fold gounded socket

## CONFIGURATION

- Finishes | Steel colors Price group 1, Steel colors Price group 2, Finishes Price group 1, Finishes Price group 2

## STANDARD

GS-zertifiziert gem. DIN EN 1729-1, DIN EN 1729-2, DIN EN 15372

FEMB level:2017 (Level 3)

Our range of materials and colors can be found in the A2S material overview.



A2S-Furnishing Systems Ltd.  
ASS-Einrichtungssysteme GmbH  
info@ass.de  
WWW.A2S.COM

# 90° CORNER EXTENSION TABLE, METAL DISMOUNTABLE (200X130)

PRODUCT-DETAIL.MODEL-2033.208



## SIZES

TABLE WIDTH	200 cm	200 cm
TABLE HEIGHT	77 cm	70 cm
TABLE DEPTH	130 cm	130 cm
PLAN DIMENSION	200x130 cm	200x130 cm
ADJUSTMENT DIMENSION	130 cm	130 cm
STACKABILITY	-	-
NUMBER OF SEATS	1	1
WEIGHT	88 kg	88 kg

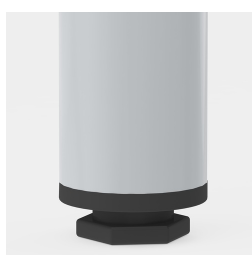
## BENEFITS/SPECIALS



Melamine coated table top with  
robust plastic edge



Optional table top with 40 mm  
corner radius



Floor saver with level  
compensation compensates for  
uneven floors