

PENTAGON EXTENSION TABLE, METAL DISMOUNTABLE (120X120 CM) PRODUCT-DETAIL.MODEL-2011.127



STANDARD VERSION

Tabletop, 3-layer chipboard (E1), melamine coated, highly abrasion-resistant, with 3 mm plastic edge, thickness: 25 mm.

Note: Table height specifications refer to a tabletop thickness of 25 mm.

4-leg base frame, side parts round tube: 40/2 mm, frame square tube rounded: 40/20/2 mm. Frame dismantable, epoxy coated, with plastic floor protector with level compensation.

Table top shape: pentagon approach

OPTIONS

- Table top finishes price group 2
- Table top HPL glued
- Table top with 40 mm corner radius
- Cable opening, Ø 80 mm
- Cable opening, Ø 90 mm
- Mesh cable duct
- Felt floor protectors
- Cable slack
- Cable clamp Ø 38-40 mm
- 6-fold gounded socket
- Table frame chrome plated
- Height adjustment 10 cm
- Without side parts

CONFIGURATION

- Finishes | Steel colors Price group 1, Steel colors Price group 2, Finishes Price group 1, Finishes Price group 2

STANDARD

GS-zertifiziert gem. DIN EN 1729-1, DIN EN 1729-2, DIN EN 15372

FEMB level:2017 (Level 3)

Our range of materials and colors can be found in the A2S material overview.



A2S-Furnishing Systems Ltd.
ASS-Einrichtungssysteme GmbH
info@ass.de
WWW.A2S.COM

PENTAGON EXTENSION TABLE, METAL DISMOUNTABLE (120X120 CM)

PRODUCT-DETAIL.MODEL-2011.127



SIZES

TABLE WIDTH	120 cm	120 cm
TABLE HEIGHT	77 cm	70 cm
TABLE DEPTH	120 cm	120 cm
PLAN DIMENSION	120 x 120 cm	120 x 120 cm
ADJUSTMENT DIMENSION	70 cm	70 cm
STACKABILITY	-	-
NUMBER OF SEATS	1	1
WEIGHT	38 kg	38 kg

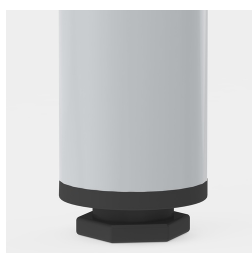
BENEFITS/SPECIALS



Melamine coated table top with
robust plastic edge



Optional table top with 40 mm
corner radius



Floor saver with level
compensation compensates for
uneven floors