

HEXAGON EXTENSION TABLE, METAL DISMOUNTABLE (137X137 CM)

PRODUCT-DETAIL.MODEL-2010.148



STANDARD VERSION

Tabletop, 3-layer chipboard (E1), melamine coated, highly abrasion-resistant, with 3 mm plastic edge, thickness: 25 mm.

Note: Table height specifications refer to a tabletop thickness of 25 mm.

4-leg base frame, side parts round tube: 40/2 mm, frame square tube rounded: 40/20/2 mm. Frame dismantlable, epoxy coated, with plastic floor protector with level compensation.

Table top shape: hexagon approach

OPTIONS

- Table top finishes price group 2
- Table top HPL glued
- Table top with 40 mm corner radius
- Cable opening, Ø 80 mm
- Cable opening, Ø 90 mm
- Mesh cable duct
- Felt floor protectors
- Cable slack
- Cable clamp Ø 38-40 mm
- 6-fold gounded socket
- Table frame chrome plated
- Height adjustment 10 cm
- Without side parts

CONFIGURATION

- Finishes | Steel colors Price group 1, Steel colors Price group 2, Finishes Price group 1, Finishes Price group 2

STANDARD

GS-zertifiziert gem. DIN EN 1729-1, DIN EN 1729-2, DIN EN 15372

FEMB level:2017 (Level 3)

Our range of materials and colors can be found in the A2S material overview.



A2S-Furnishing Systems Ltd.
ASS-Einrichtungssysteme GmbH
info@ass.de
WWW.A2S.COM

HEXAGON EXTENSION TABLE, METAL DISMOUNTABLE (137X137 CM)

PRODUCT-DETAIL.MODEL-2010.148



SIZES

TABLE WIDTH	137 cm	137 cm
TABLE HEIGHT	72 cm	70 cm
TABLE DEPTH	113 cm	113 cm
PLAN DIMENSION	137x137 cm	137x137 cm
ADJUSTMENT DIMENSION	80 cm	80 cm
STACKABILITY	-	-
NUMBER OF SEATS	1	1
WEIGHT	86 kg	86 kg

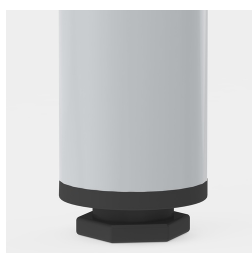
BENEFITS/SPECIALS



Melamine coated table top with
robust plastic edge



Optional table top with 40 mm
corner radius



Floor saver with level
compensation compensates for
uneven floors