

# PAGHOLZ® GAS SPRING SWIVEL STOOL PRODUCT-DETAIL.MODEL-8389



## STANDARD VERSION

PAGWOOD® seat, with ergonomic two-dimensional shell shape. Surface melamine coated and pore sealed with a scratch, impact and abrasion resistant finish created in the pressing process.  
Aluminum 5-star base, with infinitely variable gas lift height adjustment. Round tubular column: 50 mm, epoxy coated. With plastic feet.

## OPTIONS

- Seat decors (beech, maple, gray-white)
- PAGHOLZ® Color Wood - Price group 2
- PAGHOLZ® COLOUR WOOD
- Multiplex shell
- Multiplex COLOUR WOOD
- Felt floor protectors
- Load-dependent braking casters (SH +3 cm)
- Polished aluminum base

## CONFIGURATION

- PAGHOLZ® Colour Wood | PAGHOLZ® Colour Wood price group 1, PAGHOLZ® Colour Wood price group 2, PAGHOLZ® COLOUR WOOD, Steel colors Price group 1, Steel colors Price group 2

## STANDARD

FEMB level:2017 (Level 3)

DIN EN 1729-1, DIN EN 1729-2, DIN EN 16139

GS-zertifiziert gem. DIN EN 1729-1, DIN EN 1729-2

## LOAD CAPACITY

120 kg

## SIZES

SIZE	4-7
CHAIR WIDTH	73 cm
SEAT HEIGHT	62-77 cm
CHAIR DEPTH	73 cm
STACKABILITY	-
WEIGHT	6 kg

Our range of materials and colors can be found in the A2S material overview.



A2S-Furnishing Systems Ltd.  
ASS-Einrichtungssysteme GmbH  
info@ass.de  
WWW.A2S.COM

# PAGHOLZ® GAS SPRING SWIVEL STOOL PRODUCT-DETAIL.MODEL-8389



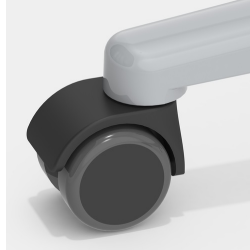
## BENEFITS/SPECIALS



PAGHOLZ® from sustainable forestry



Height adjustment by safety gas spring



Optionally with load-dependent braked casters



Indestructible PAGHOLZ® shell, scratch, break and impact resistant; flame retardant



Extremely robust aluminum base